

STANUM[®]

ARCHITECTURAL HARDWARE SOLUTION





LAKSHMI FLOAT GLASS LTD.

Lakshmi Float Glass Limited, is the leading glass distribution company in the country. We had our humble beginning in 1969 & over the last 54 years, we have been recognised for our honesty and service.

Providing the best quality products has been the hallmark of LFGL.

It is our firm belief that customer satisfaction is the key to successful business. We have a well - established distribution and service network across India.

This enriching journey has helped LFGL develop a deep understanding of customer's requirements. To take our services further, LFGL has brought together a team to cater the customer's Glass Hardware requirements through a wide range of high-quality products.

The house of LFGL brings world class products and complete solutions in glass hardware with the finest quality & technology under the brand name STANUM.

STANUM[®]

Brand “STANUM ” is defined by a singular intent to elevate customer delight, adhering to the central tenet of Reliability, performance & after sales

For you to stay ahead.

Team STANUM is cruised forward by technically adept professionals with a passion to serve people better, emphasising equally on product quality and service. What's more, with complete customer support at every step, extending from selection to installation and after-sales service.

For you to have peace of mind.

Enterprise STANUM comes from the house of Lakshmi Float Glass, comprising professionals who have led and catapulted the glass industry ahead, while being determined to usher in impeccable quality, originality and ease of use.

For you to look nowhere else.

Innovative STANUM is focused on subjecting breakthroughs to stringent lab tests and certified to Global Standards which ensures that the product is the perfect answer to the lofty visions of architects, builders, consultants and contractors who seek distinction beyond excellence.

For you to fulfill your interior dreams.

INDEX



GLASS HARDWARE

04-13

FLOOR SPRINGS HYDRAULIC PATCHES
PATCH FITTINGS
GLASS DOOR HANDLES
GLASS DOOR LOCKS

SHOWER ENCLOSURE

14-20

SHOWER HINGES
SHOWER ACCESSORIES
GLASS CONNECTORS
SEALS

GLASS SLIDING SYSTEM

21-25

GLASS SLIDING SYSTEMS
GLASS SLIDING FOLDING SYSTEM
CENTER GLASS SLIDING FOLDING SYSTEM

SPIDER FITTING

26-27

SPIDER FITTING

RAILING AND SPIGOT

28-31

GLAZING PROFILE
SPIGOT RAILING
ALUMINIUM RAILING FITTING
CANOPY

AUTOMATION

32-45

AUTOMATIC DOORS
APARTMENT LOCKS
DIGITAL LOCKS
HOTEL LOCKS
CABINET LOCKS

KITCHEN HARDWARE

46-48

CONCEALED HINGES
DRAWER CHANNELS
SLIM TANDEM BOXS
PNEUMATIC PUMPS
MULTIPURPOSE LOCKS

DOOR HARDWARE

49-56

DOOR CLOSERS
BUTT HINGES
DOOR LOCKS
CYLINDER KNOB

WOODEN SLIDING SYSTEM

56-59





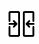



WARDROBE SLIDING SYSTEM
WOODEN SLIDING FOLDING SYSTEM
SLIDING DOORS
LOCKS AND HANDLES
TELESCOPIC SLIDING SYSTEM
SYNCHRONIZED SLIDING SYSTEM

FIRE RATED HARDWARE

60-62

FLOOR SPRINGS

— FEATURES —

-  SS304 cover plate
-  High grade cast iron body
-  Tested for 5,00,000 cycles
-  Mechanical hold-open at 90°
-  Adjustable closing & latching speed
-  Maximum door opening angle at 130°
-  Suitable for Frameless & Framed doors
-  German hydraulic oil for smooth operation

Double Cylinder

HFS-103

- Max. Door Width 1050 mm
- Max. Door Weight 90 kg

2 YEARS
WARRANTY

intertek
Total Quality Assurance

CE
CERTIFIED

Tested for
500,000
cycles



HFS-103



HFS-103-BM



HFS-103-RG



HFS-103-G

HFS-124

- Max. Door Width 1150 mm
- Max. Door Weight 120 kg

2 YEARS
WARRANTY

intertek
Total Quality Assurance

CE
CERTIFIED

Tested for
500,000
cycles



HFS-124



HFS-124-BM



HFS-124-RG



HFS-124-G

HFS-154

- Max. Door Width 1250 mm
- Max. Door Weight 150 kg

2 YEARS
WARRANTY

intertek
Total Quality Assurance

CE
CERTIFIED

Tested for
500,000
cycles



HFS-154



HFS-154-BM



HFS-154-RG



HFS-154-G

HFS-204

- Max. Door Width 1500 mm
- Max. Door Weight 270 kg

2 YEARS
WARRANTY

intertek
Total Quality Assurance

CE
CERTIFIED

Tested for
500,000
cycles



HFS-204

Single Cylinder

■ HFS-502

- Max. Door Width 700 mm
- Max. Door Weight 50 kg

2 YEARS ///
WARRANTY

Tested for
200,000
Cycles

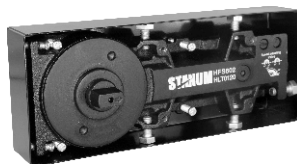


■ HFS-602

- Max. Door Width 800 mm
- Max. Door Weight 60 kg

1 YEAR ///
WARRANTY

Tested for
200,000
Cycles



■ HFS-702

- Max. Door Width 900 mm
- Max. Door Weight 70 kg

2 YEARS ///
WARRANTY



Tested for
300,000
Cycles



■ HFS-802 & BM

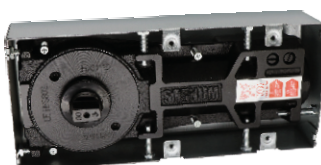
- Max. Door Width 1000 mm
- Max. Door Weight 80 kg

2 YEARS ///
WARRANTY

intertek
Total Quality Assurance

CE
CERTIFIED

Tested for
500,000
Cycles



HFS-802



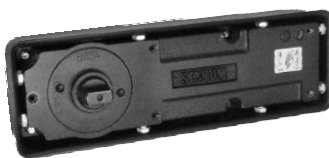
HFS-802-BM

■ HFS-360

- Max. Door Width 1500 mm
- Max. Door Weight 100 kg

2 YEARS ///
WARRANTY

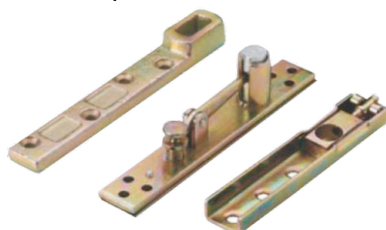
Tested for
500,000
Cycles



Accessories

■ FSA-01

Accessories for Framed/
Wooden Doors



■ FSA-02

Slim Profile Accessories



HYDRAULIC PATCH

— FEATURES —

- Fixed power size 3
- No digging on floor
- Cover Plate - SS304
- Quick and easy installation
- Tested for 5,00,000 cycles
- Mechanical hold-open at 90°
- Adjustable closing & latching speed
- Maximum door control opening angle at 135°

HHP-080

- Max. Door Width : 900 mm
- Max. Door Weight : 80 kg
- Glass Thickness : 8-12 mm
- *Note - Specially Designed for Internal Glass Doors

2 YEARS
WARRANTY

HHP-090

- Max. Door Width : 1000 mm
- Max. Door Weight : 100 kg
- Glass Thickness : 8-12 mm
- *Note - Specially Designed for Internal Glass Doors

2 YEARS
WARRANTY

HPF-2115

Top Patch for Hydraulic Patch

- Glass Thickness : 8-12 mm

HHP-080-W

Hydraulic Patch-Wooden door with Accessories

- Max. Door Width : 950 mm
- Max. Door Weight : 80 kg
- Glass Thickness : ≥ 42



HHP-080-SN



HHP-080-BM



HHP-090-SN



HHP-090-BM



HPF-2115-SN



HPF-2115-BM



PATCH FITTING

— FEATURES —

- 304 Cover Plate : SS304
- 304 Chuck Plate & Screw : SS304
- Internal body Aluminium die-cast

HPF-2101-SN

Over Panel Side Connecting Patch with pivot (Big L)

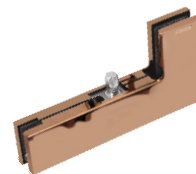
- Area of application:
To fix top glass panel & side glass panel for frameless glass door fittings



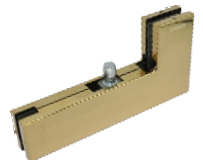
HPF-2101-SN



HPF-2101-BM



HPF-2101-RG



HPF-2101-G

HPF-2102-SN

Top Patch

- Area of application:
Top patch for frameless glass door fittings



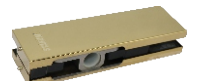
HPF-2102-SN



HPF-2102-BM



HPF-2102-RG



HPF-2102-G

HPF-2103-SN

Bottom Patch

- Area of application:
Bottom patch for frameless glass door fittings



HPF-2103-SN



HPF-2103-BM



HPF-2103-RG



HPF-2103-G

HPF-2104-SN

Wall Mounted Over Panel Patch with Pivot

- Area of application:
To fix over panel patch with wall



HPF-2104-SN



HPF-2104-BM



HPF-2104-RG



HPF-2104-G

HPF-2105-SN

Over Panel Side Connecting Patch (Small L)

- Area of application:
To fix top glass panel & side glass panel for frame less glass door fittings



HPF-2105-SN



HPF-2105-BM



HPF-2105-RG

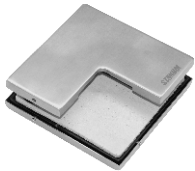


HPF-2105-G

HPF-2106-SN

Corner Patch with stopper

- Area of application:
To fix top glass panel and side glass panel with stopper for frameless glass door fittings



HPF-2106-SN



HPF-2107-SN



HPF-2108-SN

HPF-2109-SN

Wall to Glass Connecting Patch

- Area of application:
To fix single glass panel with fixed structure



HPF-2109-SN

HPF-2110-SN

Glass to Glass Connecting Patch

- Area of application:
To connect two glasses



HPF-2110-SN

HPF-2111-SN

Double Glass Connecting Patch With Fixed Structure

- Area of application:
To fix two glass panels with fixed structure



HPF-2111-SN

HPF-2112-SN

Top Pivot for Patch/Point Fitting Doors

- Area of application:
Top pivot for frameless glass door fittings



HPF-2112-SN



HPF-2112-BM



HPF-2112-RG



HPF-2112-G

■ HPL-2113-SN

Corner Patch Lock

Area of application:

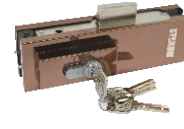
- Bottom patch lock for frameless glass doors
- With euro profile brass cylinders
- Supplied with Four high security brass keys



HPL-2113-SN



HPL-2113-BM



HPL-2113-RG



HPL-2113-G

■ HPF-2114-R-SN

Over Panel Side Connecting Patch with Fin (Right)

Area of application:

- To fix top glass panel & side glass panel patch with right fin



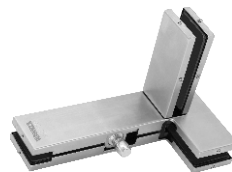
HPF-2114-R-SN

■ HPF-2114-L-SN

Over Panel Side Connecting Patch with Fin (Left)

Area of application:

- To fix over glass panel & side glass panel patch with left fin



HPF-2114-L-SN

■ HPF-2116-SN

Top Rail

- Finish - Satin
- No cutout required in glass

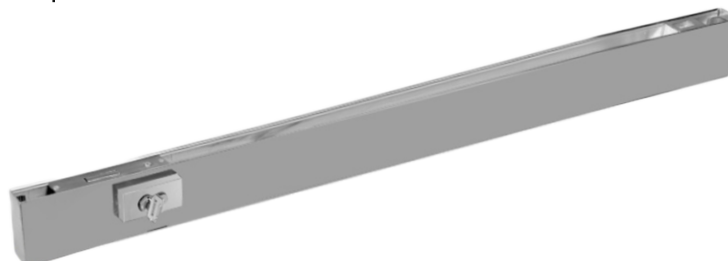


Top Rail - 1.0 mtr
Top Rail - 1.5 mtr

■ HPF-2117-SN

Bottom Rail

- Finish - Satin
- No cutout required in glass



Bottom Rail - 1.0 mtr
Bottom Rail - 1.5 mtr


DOOR HANDLE

Glass / Wooden / Framed door

— FEATURES —

 Firm positioning for opening glass door

 Glass thickness : 08 - 12 mm

 Application: for Glass / Wooden / Framed doors

■ H - Type

Material : SS304

Model no.	Handle Diameter	Length	Center to Center	Hole Diameter in glass	Finish
HPH-5101	32 mm	457 mm	305 mm	14 mm	Mid Brush & SSS
HPH-5109	25 mm	457 mm	305 mm	14 mm	SSS
HPH-5110	25 mm	600 mm	400 mm	14 mm	SSS
HPH-5113	32 mm	600 mm	400 mm	14 mm	Mid Brush & SSS
HPH-5114	32 mm	900 mm	600 mm	14 mm	Mid Brush & SSS
HPH-5115	32 mm	1200 mm	900 mm	14 mm	Mid Brush & SSS
HPH-5119	25 mm	300 mm	201 mm	14 mm	PSS & SSS
HPH-5120	32 mm	600 mm	450 mm	14 mm	SSS



■ D - Type

Material : SS304

Model no.	Handle Diameter	Length	Center to Center	Hole Diameter in glass	Finish
HPH-5103	25 mm	325 mm	300 mm	14 mm	PSS & SSS
HPH-5104	19 mm	171 mm	152 mm	14 mm	PSS & SSS
HPH-5111	25 mm	450 mm	425 mm	14 mm	SSS
HPH-5112	32 mm	600 mm	568 mm	14 mm	PSS & SSS
HPH-5116	32 mm	337 mm	305 mm	14 mm	PSS
HPH-5117	32 mm	632 mm	600 mm	14 mm	PSS
HPH-5118	25 mm	600 mm	575 mm	14 mm	SSS



Pull Handle with Lock

HPHL- 5107

- Available Finish : SSS | PSS
- Length : 1230 mm
- Handle Diameter : 25 mm
- Lock Point Diameter : 25 mm
- Attachment Point Diameter : 14 mm
- Center to Center : 990 mm
- Material : SS304

HPHL- 5122

- Available Finish : BM | Gold |SSS
- Length : 1500 mm
- Handle Diameter : 35 mm
- Lock Point Diameter : 25 mm
- Attachment Point Diameter : 14 mm
- Center to Center : 1125 mm
- Material : SS304

Offset Handle

Material : SS304

Model no.	Handle Diameter	Length	Center to Center	Hole Diameter in glass	Finish
HPH-5143	25 mm	325 mm	300 mm	14 mm	SSS
HPH-5143	25 mm	325 mm	300 mm	14 mm	BM
HPH-5144	25 mm	475mm	450 mm	14 mm	SSS
HPH-5144	25 mm	475mm	450 mm	14 mm	BM



HPHL-5107-SSS
HPHL-5107-PSS



HPHL-5122-SS



HPHL-5122-BM



HPHL-5122-Gold



F- Type



Material-SS304

■ HPH-5130-SS
25 x 457 x 305mm



Material-SS304

■ HPH-5131-SSS
32 x 600 x 400mm



Material-SS202

■ HPH-5132-PSS
32 x 600 x 400mm



Material-SS202

■ HPH-5133-MB
32 x 600 x 400mm



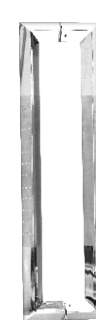
Material-SS202

■ HPH-5134-SS
32 x 600 x 575mm



Material-SS202

■ HPH-5135-MB
32 x 600 x 400mm



Material-SS202

■ HPH-5136-ST
32 x 600 x 560mm



Material-SS202

■ HPH-5137-ST
38 x 600 x 400mm



Material-SS202

■ HPH-5138-ST
32 x 600 x 400mm



Material-SS304

■ HPH-5139-MB
32 x 600 x 400mm



Material-SS304

■ HPH-5109-BM
25 x 457 x 305mm



Material-SS304

■ HPH-5109-RG
25 x 457 x 305mm



Material-SS304

■ HPH-5109-G
25 x 457 x 305mm



Material-SS304

■ HPH-5140-PSS
32 x 457 x 305mm



Material-SS304

■ HPH-5140-BM
32 x 457 x 305mm



Material-SS304

■ HPH-5141-SSS
25 x 457 x 305mm



Material-SS304

■ HPH-5141-PSS
25 x 457 x 305mm



Material-SS304

■ HPH-5141-BM
25 x 457 x 305mm



Material-SS304

■ HPH-5142-BM
30 x 1200 x 900mm



GLASS DOOR LOCKS

— FEATURES —

- ⚙️ Quick and easy installation
- 🔑 Supplied with high security brass keys
- 🔒 Operates with one side key and one side knob
- 🔒 Euro profile cylinder
- 📏 Glass thickness : 8-12 mm
- 🔒 No Cutout Required In Glass

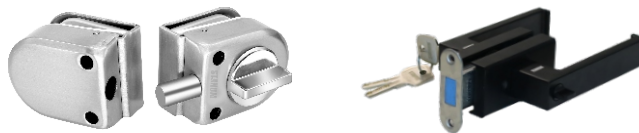
■ HGDL-104

- One Side Key
- One Side Knob



■ HGDL-105

- One Side Knob

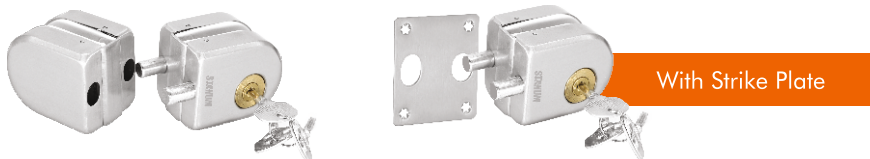


■ HGDL-101-BM

- Cutout required in glass
- One side key one side knob
- Designed for slim profiles

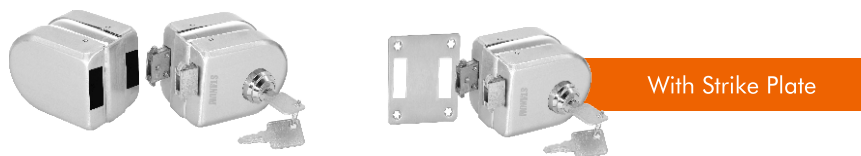
■ HGDL-106

- One Side Key
- One Side Knob



■ HGDL-108

- One Side Key
- One Side Knob



■ HGDL-109

- Cutout required in glass
- One Side Key
- One Side Knob



SHOWER HINGES

— FEATURES —

For Glass Thickness : 08-12 mm

Max. Door Width : 800 mm

Max. Door Weight : 40 kg per pair

Material : SS304

Gaskets to prevent glass damage

Protective screw cap for prevention of water seepage

■ HSH-3102-BV

Wall to Glass Hinge 90°
(Double Side)

- Area of application: For connecting wall to glass hinge at 90°



■ HSH-3103-BV

Glass to Glass Hinge 90°

- Area of application: For connecting glass door panel with fixed glass panel at 90°



■ HSH-3104-BV

Glass to Glass Hinge 180°

- Area of application: For connecting glass door panel with a fixed glass panel at 180°



■ HSH-3105-BV

Glass to Glass Hinge 135°

- Area of application: For connecting glass door panel with a fixed glass panel at 135°



■ HSH-3106-BV

Wall to Glass Bracket 0°

- Area of application: For connecting fixed glass panel with wall



■ HSH-3107-BV

Glass To Glass "T" Shower Hinge Double Action Three Way

- Area of application: Double Door with fix Glass at 90°



■ HSH-3010-ST

Offset Hinge

- Area of application: For connecting wall to glass hinge at 90°



■ HSH-3020-ST

Wall to Glass Hinge 90° (Double Side)

- Area of application: For connecting wall to glass hinge at 90°



HSH-3020
SN|PSS



HSH-3020-BM



HSH-3020-RG



HSH-3020-G

■ HSH-3030-ST

Glass to Glass Hinge 90°

- Area of application: For connecting glass door panel with fixed glass panel at 90°



HSH-3030
SN|PSS



HSH-3030-BM



HSH-3030-RG



HSH-3030-G

■ HSH-3040-ST

Glass to Glass Hinge 180°

- Area of application: For connecting glass door panel with a fixed glass panel at 180°



HSH-3040
SN|PSS



HSH-3040-BM



HSH-3040-RG



HSH-3040-G

■ HSH-3050-ST

Glass to Glass Hinge 135°

- Area of application: For connecting glass door panel with fixed glass panel at 135°



HSH-3050
SN|PSS



HSH-3050-BM



HSH-3050-RG



HSH-3050-G

■ HSH-3060-ST

Wall to Glass Bracket 0°

- Area of application: For connecting fixed glass panel with wall



HSH-3060
SN|PSS



HSH-3060-BM



HSH-3060-RG



HSH-3060-G

■ HSH-3070-ST

Glass To Glass "T" Shower Hinge Double Action Three Way

- Area of application: Double Door with fix Glass at 90°



HSH-3070
SN|PSS



HSH-3070-BM



HSH-3070-RG



HSH-3070-G

SHOWER ACCESSORIES

— FEATURES —

ⓘ Grub screw to hold pipe firmly

☑ Firm grip with glass panel

🛡 With gasket to prevent glass damage

304 Material : SS304 | Brass

⌀ Diameter : 19 mm

■ HSA-01

Shower Header Wall Socket

- Area of application: To join reinforcing pipe with wall for shower cubical fitting



HSA-01-SN|PSS



HSA-01-BM



HSA-01-RG



HSA-01-G

■ HSA-02

Shower Header Wall Socket for 135°

- Area of application: To support reinforcing pipe with glass and firm grip with panel



HSA-02-SN|PSS



HSA-02-BM



HSA-02-RG



HSA-02-G

■ HSA-03

Shower Header Support Clamp

- Area of application: To support reinforcing pipe with glass and firm grip with panel



HSA-03-SN|PSS



HSA-03-BM



HSA-03-RG



HSA-03-G

■ HSA-04

Shower Header Support Clamp for End Caps

- Area of application: To support reinforcing pipe with glass and firm grip with panel



HSA-04-SN|PSS



HSA-04-BM



HSA-04-RG



HSA-04-G

■ HSA-05

Shower Header Clamp for Two Way Connecting Rod

- Area of application: To join reinforcing pipes at adjustable angle



HSA-05-SN|PSS



HSA-05-BM



HSA-05-RG



HSA-05-G

■ HSA-06

Shower Header Clamp for Three Way Connecting Rod

- Area of application: Clamps to join three reinforcing pipes
- Non adjustable angle



HSA-06-SN|PSS



HSA-06-BM



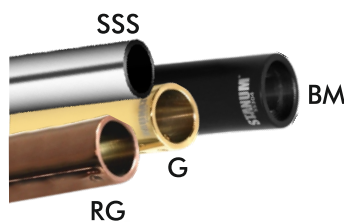
HSA-06-RG



HSA-06-G

■ HSR-07 -Reinforcing Rod

- Thickness : 1.5 mm
- Material : SS304
- Diameter : 19mm
- Available in 2 to 3mtr



■ HPH-5105-TB-D

Towel Bar with Handle (19 mm)

- Area of application: Handles for shower glass door
- Size : 476 x 171 mm
- Hole to Hole : 457 x 152mm



HPH-5105
TB-D-SN|PSS



HPH-5105-BM



HPH-5105-RG



HPH-5105-G

■ HPH-5106-TB-D

Towel Bar with Handle (19 mm)

- Area of application: Handles for shower glass door
- Size: 469 x 169 mm
- Hole to Hole: 450 x 150mm



HPH-5106-TB-D

■ Door Knob

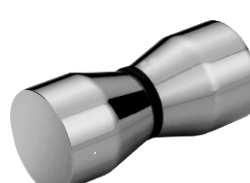
- Hole Diameter 10mm



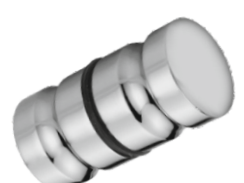
HDK-07



HDK-08



HDK-09




HDK-10

GLASS CONNECTORS


— FEATURES —

 Connector Thickness

 PSS/SSS : 03 mm

 BM/RG/G : 04 mm (Casting)

 With gasket to prevent glass damage

 Material SS304

 Firm grip with glass panel

 Glass Thickness 8-12 mm

■ HGC-4101

Wall to Glass Connector 0°

- Area of application: For fixing glass panels with wall or floor



HGC-4101-SN|PSS



HGC-4101-BM



HGC-4101-RG



HGC-4101-G

■ HGC-4102

Wall to Glass Connector 90°

- Area of application: For fixing glass panels with wall or floor at 90° angle



HGC-4102-SN|PSS



HGC-4102-BM



HGC-4102-RG



HGC-4102-G

■ HGC-4103

Glass to Glass Connector 90°

- Area of application: For fixing two glass panels at 90° angle



HGC-4103-SN|PSS



HGC-4103-BM



HGC-4103-RG



HGC-4103-G

■ HGC-4104

Wall to Glass Connector 180°

- Area of application: For fixing glass panels with wall at 180° angle



HGC-4104-SN|PSS



HGC-4104-BM



HGC-4104-RG



HGC-4104-G



■ HGC-4105

Glass to Glass Connector 180°

- Area of application: For fixing two glass panels at 180° angle



HGC-4105-SN/CP



HGC-4105-BM



HGC-4105-RG



HGC-4105-G

■ HGC-4107

Glass to Glass Connector 135°

- Area of application: For fixing two glass panels at 135° angle



HGC-4107-SN|CP

■ HGC-4108

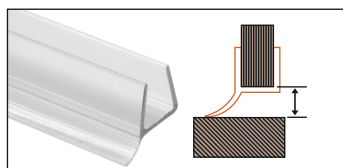
Three Way Glass Connector

- Area of application : For fixing 3 glass panels

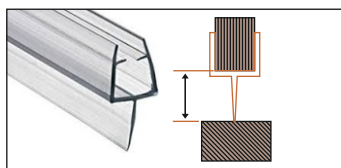


HGC-4108-SN|CP

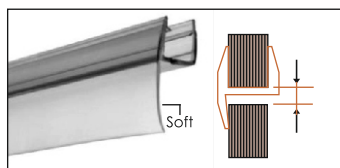
2.2 Mtr (Glass Thickness-8mm to 10 mm)



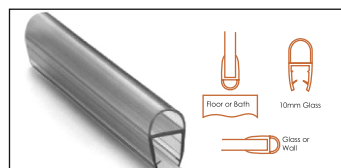
SSP-01 Wall Seal / Bottom Seal



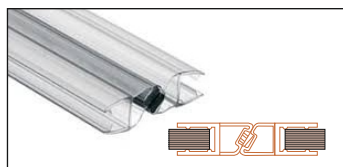
SSP-02 Central Seal



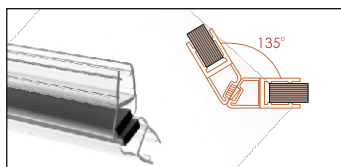
SSP-04 Central Weather Seal 180°



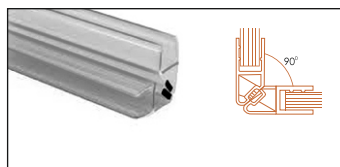
SSP-08 Central Weather D Seal 180°



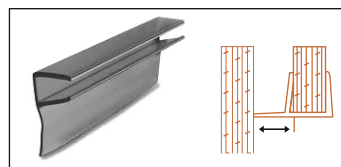
SSP-09M Magnetic Seal 180°



SSP-10M Magnetic Seal 135°

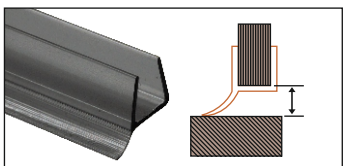


SSP-11M Magnetic Seal 90°

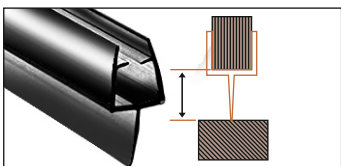


SSP-14 Offset Lip seal

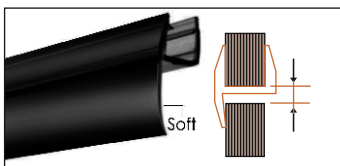
2.2 Mtr (Glass Thickness-10 mm) available in - BM



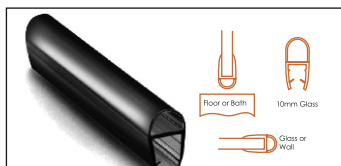
SSP-01 Wall Seal / Bottom Seal



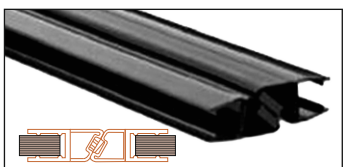
SSP-02 Central Seal



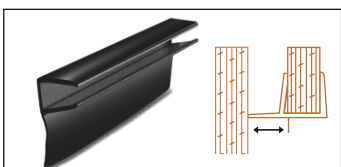
SSP-04 Central Weather Seal 180°



SSP-08 Central Weather D Seal 180°



SSP-09M Magnetic Seal 180°

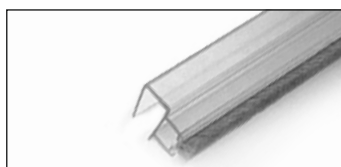


SSP-14 Offset Lip seal

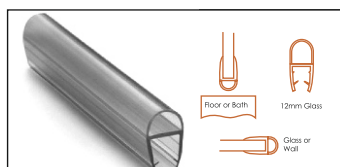
3 Mtr



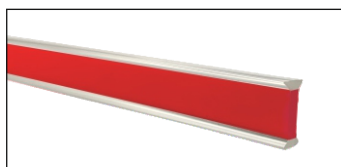
SSP-15 Brush seal (Central Seal)
Available in 10mm & 12mm



SSP-16 Brush seal (Side Seal)
Available in 10mm & 12mm



SSP-17 D Seal
Available in 12mm



SSP-18 (PC / I Profile)
Glass thicknesses of 10 & 12mm

GLASS SLIDING SYSTEM

FEATURES —

- Material : SS304
- Finish : Satin Stainless Steel

■ HDSL-C301

- Weight 80 kg



Floor guide (1 pc)



Stopper (2 pcs)



Adjustment tool (1 pc)



Roller for glass door (2 pcs)

■ HDSL-C401

- Weight 40 kg



Floor guide (1 pc)



Stopper (2 pcs)



Handle (1 pc)



Roller for glass door (2 pcs)

■ HDSL-T1

Specifications

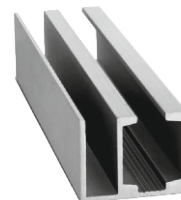
- Aluminum Anodized
- Track for Single/Double Door
- Available in 2mtr. / 4mtr.



■ HDSL-T3

Specifications

- Aluminum Anodized
- Track for Door and Fixed Glass
- Available in 2mtr. / 4mtr.



■ HSSL-A101

- Weight : 65kg
- Track : 2Mtr.
- Material : SS304
- Glass Thickness : 8-12mm
- Clear Opening : 950mm
- Door Height : 2280mm

S.no	Shower Sliding Screen Components	Qty
01	Roller	2 Pcs.
02	Track To Glass Holder	2 Pcs.
03	Stopper	2 Pcs.
04	Floor Guide	1 Pcs.
05	Wall To Track Connector	2 Pcs.
06	Sliding Door Handle	1 Pcs.
07	Adjustable Knob (Track to Roller)	2 Pcs.



HSSL-A101-PSS



HSSL-A101-BM



HSSL-A101-RG



HSSL-A101-G



HSSL-Track-01-PSS



HSSL-Track-01-BM



HSSL-Track-01-RG



HSSL-Track-01-G

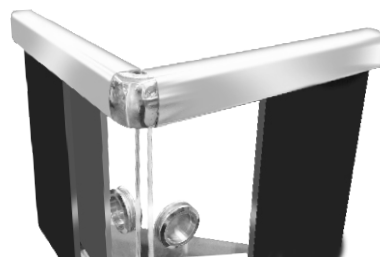
■ HD SL-C501






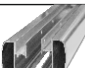

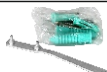
- Weight : 50 kg
- Glass Thickness : 8-10 mm
- Glass Height : 2100 mm
- Glass Width : 950 mm



■ HD SL-C601

- Weight : 50 kg(Each)
- Glass Thickness : 8-10 mm
- Glass Height : 2100 mm
- Glass Width : 950 mm



S.no	SHOWER SLIDING SCREEN COMPONENTS		C501	C601
01		SLIDING DOOR WHEEL	2 Pcs.	4 Pcs.
02		WALL MOUNTING BRACKET	2 Pcs.	4 Pcs.
03		FLOOR GUIDE	1 Pcs.	2 Pcs.
04		STOPPER WITH COLLISION AVOIDANCE	2 Pcs.	4 Pcs.
05		TRACK CORNER JOINT	NA	1 Pcs
06		ALUMINIUM TOP TRACK	1 Pcs. (2Mtr.)	2 Pcs. (2Mtr.)
07		ROUND HANDLE	1 Pcs.	2 Pcs.
08		ACCESSORIES	1 Pcs.	2 Pcs.

■ HSDA-01-SSS

Sliding Door Accessories
Glass to Track fixer



■ HSDA-03-SSS

Sliding Door Accessories
Wall to Track fixer



HGDL-104



HSDH-01-SSS




HSDH-02-SSS



HSDH-03-SSS

GLASS SLIDING FOLDING SYSTEM

— FEATURES —


 Gaskets Provided to Prevent Glass Damage and for firm grip

 Track : 12ft | 16ft

 Max Panel Weight : 80 kg

 Max panel width : 800mm

 Max height : 2400mm

 Material SS304

 Secure grip on glasses

 Glass thickness 8-12 mm

 Allen key screw for firm grip

HDSL-001-G
Glass to Glass Connector
with stopper

• **Top Fitting**
Application : Sliding Folding Panels
Connector With Guide Locator



Features

- Ensures friction free folding action of the doors

• **Bottom Fitting**
Application : Sliding Folding
Panels Connector With Lock



Features

- Connects panels at the bottom
- Locking pin provided for locking the panel with floor
- Spring loaded locking pin
- Locking pin can be released by pressing the release knob

HDSL-002-G
(Intermediate Roller
with Guide)

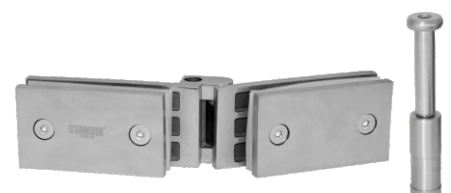
• **Top Fitting**
Application:- Sliding Folding
Panels Connector With Roller
Assembly



Features

- With four friction free rollers
- Guide location for free sliding action

• **Bottom Fitting**
Application:- Sliding Folding Panels
Connector With Guide Locator



Features

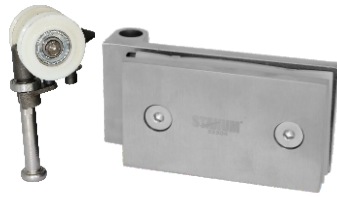
- Ensures friction free folding action of the doors
- With four friction free rollers

■ HDSL-003-G

End Roller with Guide Roller

• Top Fitting

Application : Sliding Folding
Panel Top End Fitting



Features

- With two friction free rollers
- Guide location for free sliding action

• Bottom Fitting

Application : Sliding Folding Swing
Panel Bottom Fitting



Features

- With pivot pin secured with plastic bushing
- Designed for perfect setting with bottom track
- Off set pivot point to keep pivot line perfectly vertical

■ HDSL-004-G

Wall to Glass Connecting Hinge Top / Bottom Fitting

Top / Bottom fitting

Application:- Wall To Glass Hinge

Features

- Hinge suitable for swing door system
- Designed to follow sliding folding system components concept

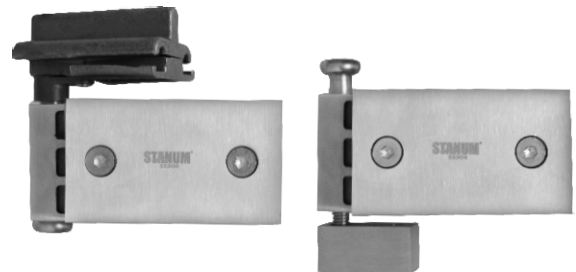


■ HDSL-005-G

Sliding Folding Swing Panel Top Fitting With pivot block

Features

- Designed for perfect setting with top track
- Smooth pivot point for friction less swing action
- Offset pivot point to keep glass panel in line
- Sliding Folding Swing Panel Bottom Fitting with pivot pin secured with SSS
- Designed for perfect seating with bottom track
- Offset pivot point to keep pivot line perfectly vertical

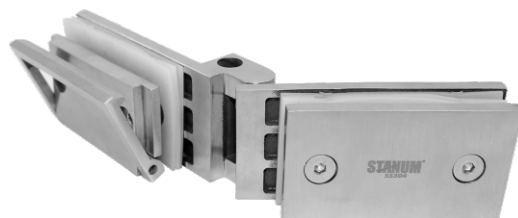


■ HDSL-006-G

Central Fitting with Handle

Features

- Connects panels at the Center with handle
- Recessed handle

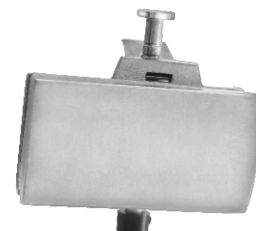


■ HDSL-007-G

Sliding Folding Panel Bottom End Fitting for odd panels Locking pin provided for locking the panel with floor

Features

- Spring loaded locking pin
- Locking pin can be released by pressing the release knob
- Left right as per site requirement

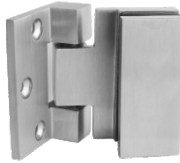


Center Glass Sliding Folding Door System

■ HCSF-001

Features

- Hinge wall to glass mounted
- Hinges keeps the panels flat when closed
- Panels are connected with hinge
- Cover plate of hardware secured with grub screw



■ HCSF-002

Features

- Hinges keeps the panels flat when closed
- Panels are connected with hinge
- Cover plate of hardware secured with grub screw



■ HCSF-003

Features

- Top track required
- Hinges keeps the panels flat when closed
- Nylon wheels with integrated bearings for quite & smooth running
- Panel height adjustable with roller
- Panels are connected with hinge
- Cover plate of hardware secured with grub screw



■ HCSF-004

Features

- Digging required
- Locking panels

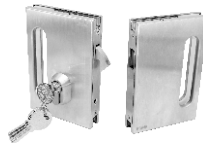


■ HDSL-008-G to G

Glass to Glass sliding door lock

Features

- Supplied with euro profile cylinder and high security keys
- With strike Box
- One Side key one side knob



■ HDSL-009-G to W

Glass to Wall sliding door lock

Features

- Supplied with euro profile cylinder and high security keys
- With strike Plate
- One Side key one side knob



■ HDSL-TT

Top Track

Features

- Mounted to the ceiling
- Total height 50mm
- Available in 12ft & 16ft
- Perfect curvature to accommodate Rollers Aluminum alloy track Sturdy and Rigid design for smooth working of the system



■ HDSL-BT

Bottom Track

Available in 12ft & 16ft



SPIDER FITTING

— FEATURES —

 PVC Gaskets

 With Fin and Without Fin

■ HSP-6101-SSS

ONE WAY FIN SPIDER FIXING
WITH CEILING/WALL

Features

- For vertical support
- To join single glass panel with ceiling/wall
- Teflon washers to prevent damage to glass with 2 SS fasteners
- Material : SS316



■ HSP-6102-SSS

TWO WAY FIN SPIDER FIXING
WITH CEILING/WALL (90°)

Features

- for vertical support
- To join 2 glass panels with ceiling
- Teflon washers to prevent damage to glass with 2 SS fasteners
- Material : SS316



■ HSP-6103-SSS

TWO WAY FIN SPIDER (180°)

Features

- To join 2 glass panels assembly with glass fin
- Teflon and PVC washers/gaskets to prevent damage to glass
- Material : SS316



■ HSP-6104-SSS

FOUR WAY FIN SPIDER

Features

- To join 4 glass panels assembly with glass fin
- Teflon and PVC washers/gaskets to prevent damage to glass
- Material : SS316



■ HSP-6105-SSS

ONE WAY WITHOUT FIN SPIDER
FITTING

Features

- To join glass at one point without fin
- To be used with HSP-6114-SSS for joining with a fixed structure
- Material : SS316



■ HSP-6106-SSS

TWO WAY WITHOUT FIN
SPIDER FITTING (180°)

Features

- To join two glasses without fin at 180
- To be used with HSP-6114-SSS for joining with a fixed structure
- Material : SS316



SPIDER FITTING

■ HSP-6107-SSS

TWO WAY WITHOUT FIN SPIDER FITTING (90°)

Features

- To join two glasses without fin at 90°
- To be used with HSP-6114-SSS for joining with a fixed structure
- Material : SS316



■ HSP-6109-SSS

FOUR WAY WITHOUT FIN SPIDER FITTING

Features

- To join four glasses without fin.
- To be used with HSP-6114-SSS for joining with a fixed structure
- Material : SS316



■ HSP-6111-SSS

ARTICULATED BOLT FOR FLAT HEAD
(On order Big Size & DGU Routel)

Features

- Used to attach spider fitting with glass
- Teflon washers/gaskets to prevent damage to glass
- Adjustable up to 13.52 mm glass thickness
- Material : SS316



■ HSP-6113-SSS

SPLICE PLATE - 300 MM
(On order splice plate-200mm, 400 & 450mm)

Features

- To join two pieces of glass fin together
- Three point joining of fin
- Teflon and PVC washers/gaskets
- To prevent damage to glass
- Material : SS304



■ HSP-6108-SSS

THREE WAY WITHOUT FIN SPIDER FITTING

Features

- To join three glasses without fin.
- To be used with HSP-6114-SSS for joining with a fixed structure
- Material : SS316



■ HSP-6110-SSS

FIXED BOLT FOR FLAT HEAD

Features

- Used to attach spider fitting with glass
- Teflon washers/gaskets to prevent damage to glass
- Adjustable up to 21 mm thickness of glass
- Material : SS316



■ HSP-6112-SSS

FIN PLATE- 300 MM
(On order Fin plate-200mm, 400mm, 450mm)

Features

- To join glass fin with ceiling or floor
- Three Hole to grip glass
- Teflon and PVC washers/gaskets to prevent damage to glass
- Flat base to join strongly with floor or ceiling
- Material : SS304



■ HSP-6114-SSS

CONNECTOR TO JOIN WITHOUT FIN SPIDER FITTING

Features

- Connector to join without fin spider fittings with fixed structure
- Outer sleeve made by Iron steel so that sleeve can be weld with structure easily
- Material : SS304



■ HGL-PR-01 -AN & BM Glazing Profile

Features

- Attached with ceiling, floor or wall
- Available in lengths of 10 ft
- Easy and simple installation of the glass panel
- Low maintenance cost
- Slim & attractive design. Low visual impact saving
- Used For 10 or 12 mm glass thickness
- Finish : Anodised & BM



■ Glazing Profile end Cap Material SS304



BALUSTER RAILING FITTING

Features

- Pre-fabricated post with base plate and glass connectors
- Multiple post sizes for relevant load requirements
- Simple on-site installation
- Material : SS304

■ HRA-02

To Fix Glass with Stud

Available in 14 inch
Available in 17 inch



■ HRA-03

To Fix Glass with CSK Stud

Available in 14 inch
Available in 17 inch



■ HRA-04

To Hold Glass with Stud

Available in 14 inch
Available in 17 inch



■ HRA-05

5.3inch (To Hold Glass with
Spigot No Cutout Required)



■ HRA-06

To Hold Glass with Spigot

Available in 6 inch
Available in 9 inch



Aluminium Railing Fitting

TOP RAILING FITTING

- Material : Aluminium Alloy
- Finish : Mill finish, Anodized, Wooden coated, Grey
- Length available : 13ft, 16ft
- Glass thickness : 12mm

*Gaskets for secure grip



HRA-AL-TR-01
38mm Round



HRA-AL-TR-02
50, 65mm Square



HRA-AL-TR-03
25 x 25mm Square



HRA-AL-TR-04
32 x 32 mm
50 x 50 mm



HRA-AL-TR-05
61 x 41 mm Rectangle



HRA-AL-TR-06
55 x 30 mm Mini Oval



HRA-AL-TR-07
70 x 35 mm Rectangle



HRA-AL-TR-08
35 x 40 mm



HRA-AL-TR-09
60 x 45 mm Diamond



HRA-AL-TR-10
82 x 38 mm Incline



HRA-AL-TR-11
70 x 35 mm

Aluminium Railing Fitting

BOTTOM RAILING FITTING



HRA-AL-BR-01
40 x 30mm



HRA-AL-BR-02
100 x 37mm



HRA-AL-BR-03
100 x 55mm



HRA-AL-BR-04
120 x 45mm

*Other finishes available on demand-



HRA-AL-BR-05
Triangle Continue



HRA-AL-BR-06
Triangle Continue
with Cover



HRA-AL-BR-07
60 x 45mm



HRA-AL-BR-08
80 x 70mm



HRA-AL-BR-09
125 x 70 mm Bracket



HRA-AL-BR-10
Commercial Bracket



HRA-AL-BR-11
T Bracket (65mm)

Aluminium Railing Fitting Accessories



HRA-AL-ACC-01
Elbow



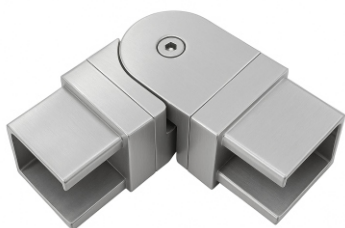
HRA-AL-ACC-02
Railing jointer



HRA-AL-ACC-03
Concealed end cap



HRA-AL-ACC-04
End cap



HRA-AL-ACC-05
Universal



HRA-AL-ACC-06
Railing jointer



HRA-AL-ACC-07
Concealed end cap



HRA-AL-ACC-08
End cap

*Other finishes available on demand-

CANOPY

■ HCF-01-SSS

Wall to Glass Holder Connector 90°

Features

- More threads to adjust as per height of canopy
- Useful for smaller size canopy fitting
- To hold Glass with wall at 90°
- Material : SS304



■ HCF-03-SSS

Wall to Rod Connector for canopy Fitting to Hold rod to the wall

Features

- To be used with HCF-02-SSS with cable or rod
- Firm base for safe canopy fitting to be used in pairs
- Material : SS304



■ HCF-01-SSS (Small)

Wall to Glass Holder Connector

Features

- Adjustable Angle as per the requirement
- Firm base for safe canopy fitting
- To be used in pairs
- To hold glass with wall Adjustable
- Material : SS304



■ HCF-03-SSS (Small)

To Hold Cable or rod with wall

Features

- Adjustable Angle as per the requirement
- To be used along with HCF-02-S
- To be used in pairs
- Material : SS304



■ HCF-02-SSS

Glass Connector for Canopy Fitting to hold Glass for Canopy Width

Features

- To be used along with HCF-03-SSS with cable or rod
- Length can be adjusted as per requirement
- To be used in pairs
- Material : SS304



■ HCF-ROD-16mm

Connecting Rod (Per Mtr)

- Material : SS304



■ HCF-02-SSS (Small)

To Hold Glass with Cable or rod

Features

- Adjustable Angle as per the requirement
- To be used along with HCF-03-S with cable or rod
- Wall connector for canopy
- To be used in pairs
- Material : SS304



■ HCF-ROD-10mm

Connecting Rod (Per Mtr)

- Material : SS304

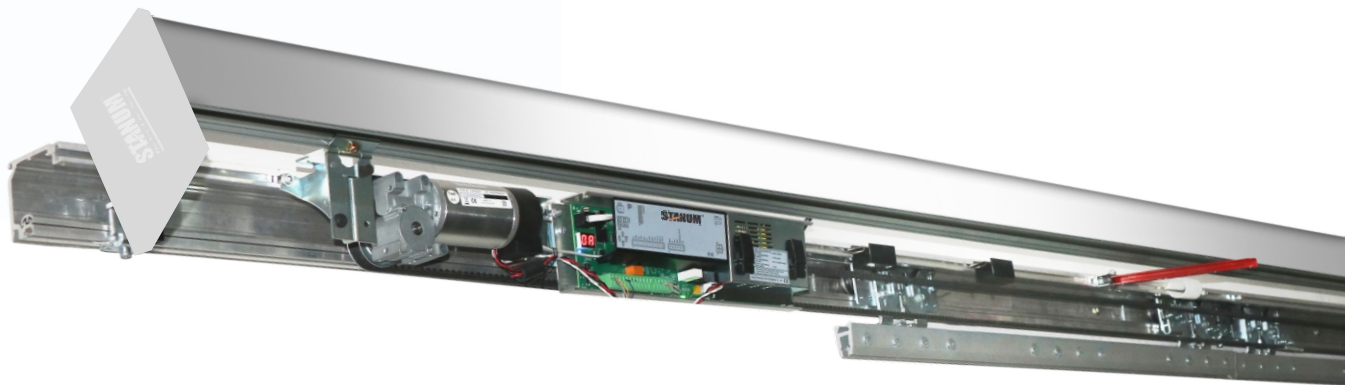


AUTOMATIC DOORS

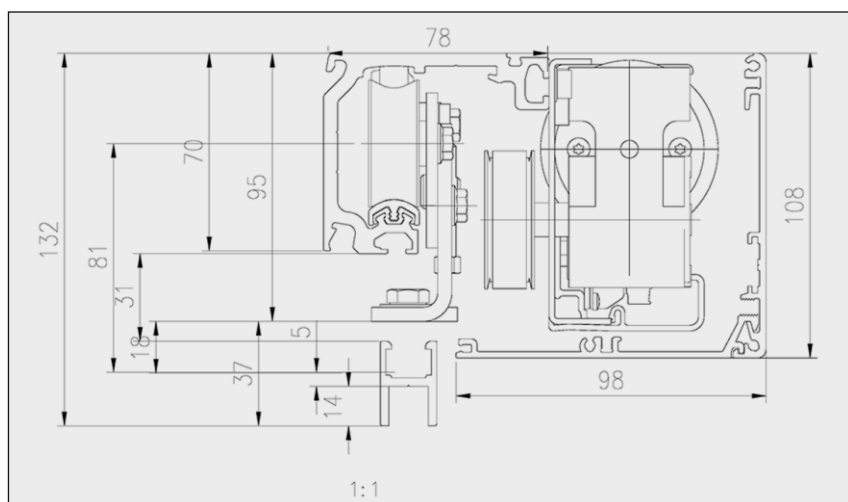
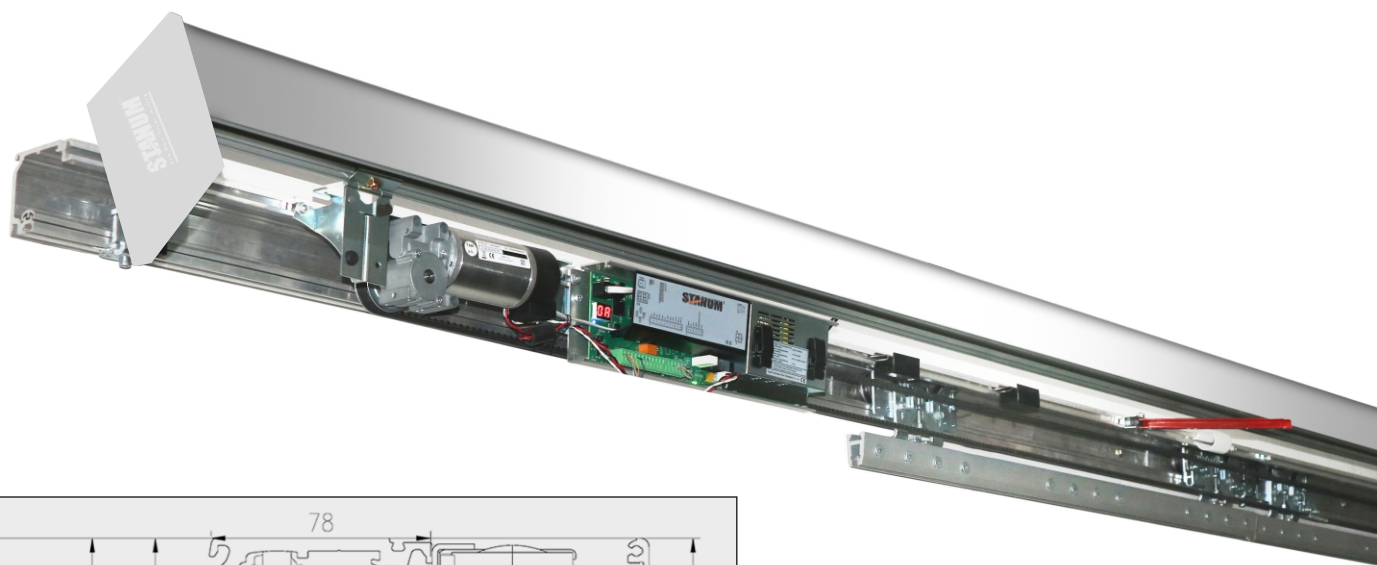
FEATURES —

- ⚠ Error Display
- 🧽 Anti-static Brushes
- 🛡 Hybrid Safety Sensor
- 📏 108 MM Channel Height
- 📦 Compact and Sleek Design, Low Noise, Low Power
- 🏢 **Application:** Airports, Hospitals, Shopping Complexes, Showrooms, Warehouses, Commercial Complexes, General Stores, Museums etc.

HAD-XEO-3100

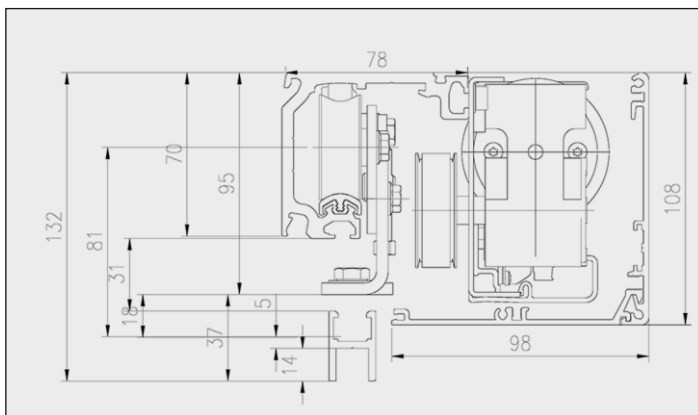
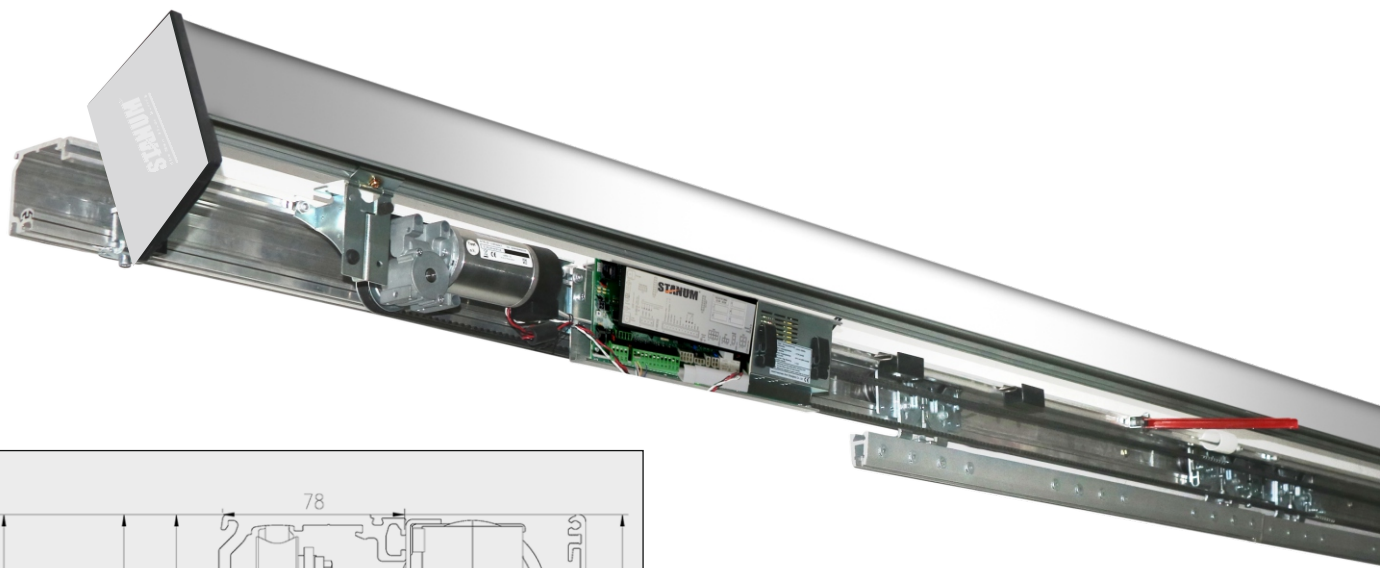


Max. door Weight	1x100	
Door Height	UP to 2500 MM Max	
Clear Width	800 - 1200 MM	
Installation	Surface, Ceiling, Lintel	
Static Power Consumption	25 W	
Opening Speed	100-500 mm/sec.	
Closing Speed	100-400 mm/sec.	
Hold Time	20 sec (Adjustable)	
Features	Automatic Reverse, Partial opening, Automatic Locking, Locked Mode	
Emergency Open (Manually)	Yes	
Supply Voltage	230VAC, 50/60 HZ	
Sensors	Hybrid (Actuation + Safety)	
Certifications	CE, ISO-9001	



Technical Parameters

Max. door Weight	1x120 Kg, 2x75 Kg
Door Height	UP to 2500 MM Max.
Clear Width	800-2000 MM
Installation	Surface, Ceiling, Lintel
Static Power Consumption	25W
Opening Speed	100-500 mm/sec.
Closing Speed	100-400 mm/sec.
Hold Time	20 sec (Adjustable)
Features	Automatic Reverse, Partial opening, Automatic Lockin, Locked Mode
Emergency Open (Manually)	Yes
Supply Voltage	230VAC, 50/60 HZ
Sensors	Hybrid (Actuation + Safety)
Certifications	CE, ISO-9001



Technical Parameters

Max. door Weight	1 X 120 Kg, 2 X 90 Kg
Door Height	Up To 2500 MM
Clear Width	800-3000 MM
Installation	Surface Lintel, Ceiling.
Static Power Consumption	25W
Opening Speed	100-700 mm/sec
Closing Speed	100-500 mm/sec.
Hold Time	20 sec (Adjustable)
Features	Automatic Reverse, Partial Opening, Automatic Locking, Locked Mode, Holding Bar
Emergency Open (Manually)	Yes
Supply Voltage	230VAC, 50/60 HZ
Sensors	Hybrid (safety + Activation)
Standard Compliance	EN16005, DIN 18650, EN ISO 13 849.
Temperature Range(°c)	-15°c To 50°c
Easy Programmer For Programming And Settings	

Automatic Overhead Swing Door Operator

■ HAD-SD-80

Technical Specification

- Max. Door width : $\leq 900\text{mm}$
- Max. Door weight : $\leq 60\text{KG}$
- Open angle : $90^\circ - 130^\circ$ adjustable
- Open direction : One Side
- Hold open time : 1-30 seconds adjustable
- Opening speed : 4-10 seconds adjustable
- Closing speed : 4-10 seconds adjustable
- Remote control function : Open, close, lock, hold open function
- Installation : For framed door
- Push Open : Yes
- Manual Opening : Yes (in case of power failure)
- Automatic Reverse on obstacle : Yes
- Close buffer function : Yes
- Power supply : 220V
- Power : Static 6W, maximum 60W
- Dimension of main machine : Length 351*Width 82*Height 75
- Two-door interlock function : Available
- Integration : Possible with sensors, ACS, biometric devices etc.



Automatic Concealed Swing Door Operator

■ HAD-CSD-150

Technical Specification

- Max. Door width : $\leq 1200\text{mm}$
- Max. Door weight : $\leq 150\text{KG}$
- Open angle : $90^\circ - 130^\circ$ adjustable
- Open direction : Optional
- Hold open time : 1-30 seconds adjustable
- Opening speed : 4-10 seconds adjustable
- Closing speed : 4-10 seconds adjustable
- Installation : For frame less & framed doors
- Push Open : Yes
- Manual Opening : Yes (In case of power failure)
- Remote control function : Open, close, lock, hold open function
- Automatic Reverse on obstacle : Yes
- Close buffer function : Yes
- Power supply : 220V
- Power : Static 5W, maximum 40W
- Dimension of main machine : Length 354*Width 148*Height 68
- Two-door interlock function : Available
- Integration : possible with sensors, ACS, biometric devices etc

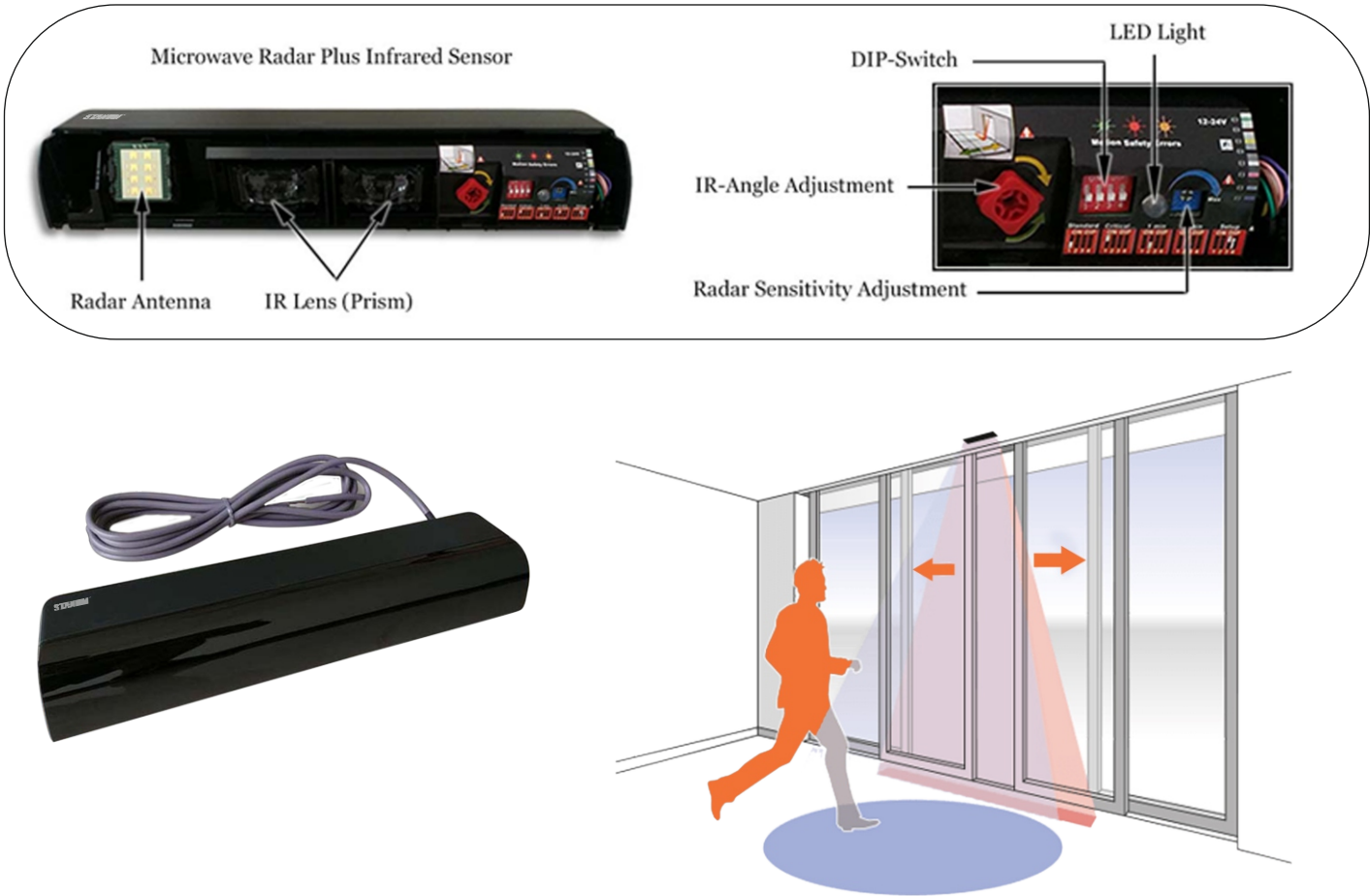


AUTOMATIC DOOR ACCESSORIES

HAD-ACC-HS

STANUM HYBRID automatic sliding door motion & safety sensor
(Microwave radar activation & active infrared safety dual mode combination sensor)

STANUM HYBRID motion detector triggers the door's opening and also function as a safety sensor to improve the pedestrian experience of using automatic doors and avoid unnecessary accidents.



Supply voltage:	12 V - 24 V AC +/-10%; 12 V - 30 V DC 0%/+10%	
Power consumption:	<3 W	
Mounting height:	1.8 m to 3 m	
Temperature range:	-25 °C to +55 °C	
Degree of protection:	Ip54	
Detection mode:	Motion Min. detection speed: 5 cm/s	Presence Typical response time: <128 ms (max. 500 ms)
Technology:	Microwave doppler radar Transmitter frequency: 24.150 GHz Transmitter radiated power: < 20 dBm EIRP Transmitter power density: < 5 mW/cm2	Active infrared with background analysis Spot diameter: 6 cm (typ) Number of spots: 24 by curtain Number of curtains: 1
Angle:	From 15° to 45° vertical (adjustable)	From -5° to +8° (adjustable)
Output	Relay (free of potential) Max. contact voltage: 42 V AC/DC Max. contact current: 1 A (resistive) Max. switching power: 30 W (DC)/60 VA (AC)	Relay (free of potential) Max. contact voltage: 42 V AC/DC Max. contact current: 1 A (resistive) Max. switching power: 30 W (DC)/60 VA (AC)
Hold time output signal:	0.5 s	0.5 s

AUTOMATIC DOOR ACCESSORIES

■ HAD-ACC-WPP

Wireless Push Plate

FEATURES

- 434 MHz wireless is the ideal solution for specific applications where sensors are not suitable
- 2 wireless push plate + 1 receiver
- Can be installed on the door or on a wall
- Life time of battery minimum 1 year (2 x AAA)
- LED visual signal
- Range upto 25m in LOS
- Plug and play



■ HAD-ACC-VRR

Bolt Lock for 6200 Door



■ HAD-ACC-KS4

4 Way Key Switch

- Continuous opening Mode
- Automatic Mode
- Partial Opening Mode
- Locked Mode



■ HAD-ACC-GC

Glass Clamp

- For frameless Glass
- Glass held by gaskets for better hold
- No need for cutouts
- Available in 1 & 1.5 mtr.



■ HAD-ACC-FG-F

Floor Guide for Framed/Wooden Door

- For framed/wooden door
- Adjustable width 35mm-50mm
- With Brush and roller guider for noiseless and scratch free action



■ HAD-ACC-FG

Floor Guide for Frameless Glass Door

- For frameless glass doors.
- Suitable for 10mm & 12mm glass thickness
- With Brushes for noiseless and scratch free action
- Easy Installation



■ HAD-ACC-MPB

Metal Push Button

- With 'Door Exit' written on button
- High grade plastic



■ HAD-ACC-MWS

Microwave Sensor

- Supply voltage : 12V-24V AC +/-10%, 12V-30V DC 0%/+10%
- Power consumption : <3W
- Mounting height : 1.8m - 3.0m
- Temperature range : -25°C - +55°C
- Degree of protection : Ip54



■ HAD-ACC-MS

Magic Switch

- Technology Microwave motion sensor
- Radiated frequency 24.150 Ghz
- Supply voltage 12-30V DC +/- 10%
- Antimicrobial front face
- Power consumption < 1.5W
- Sensing distance Adjustable 10-60cm



■ HAD-ACC-MS01

Magic Switch

- Technology Infrared
- Radiated frequency RF315MHZ
- Sensing distance Adjustable 1-15cm
- Supply voltage 12-36 VDC



■ HAD-ACC-MWS-02

Microwave Sensor

- Microwave (unidirectional)
- Supply voltage : 12V-24V AC +/-10%, 12V-30V DC 0% / +10%
- Power consumption : <3W
- Mounting height : 1.8m - 3.0m
- Temperature range : -25°C - +55°C



■ HAD-ACC-SFS

Safety Sensor

- Infrared
- Easy installation
- Higher user safety



■ HAD-FS-01

Foot Sensor

- Photoelectric type Toe insert type
- Embedded in wall
- 12VDC





DIGITAL LOCKS

— FEATURES —

🔒 Safe & Secure

🔌 Auto freeze

🚪 Wooden & Framed door

🔑 Mechanical Keys

🔋 Low voltage alarm

🔌 Emergency Power supply

■ HSDL-001-GD & FD

Features

- Material : Aluminium Alloy
- Unlocking ways : App, Fingerprint, Card, Password, Remote, Key
- Door Bell : Yes
- Automatic Locking : Yes
- Fingerprints : 200
- Cards : 200
- Custom Password : 150 (Unrestricted from App)
- Glass Thickness : 10-12MM
- Working Power Supply : 4AA Alkaline batteries
- Battery life : Use for about 8-10months

*Also Available for Wooden Door

*6 Way Access



**HSDL-001-GD
HSDL-001-FD**

■ HNL-002-Digital

Features

- Working Voltage : 4AA Alkaline batteries
- Administrator : 9 Group
- Unlocking ways : App, Fingerprint, Card, Password, Key
- Mechanical Key : Yes
- Fingerprints : ≤100
- Cards Capacity : ≤100
- Password Capacity : ≤100
- Password : 6-8 bit

*Available for Wooden / Metal Door

*Available with VDP also

*Internal /External Door



■ HAL-007

Features

- Unlock Methods : Fingerprint, IC Card, Password, App, Key
- Material : Zinc Alloy
- Fingerprints : ≤ 100
- Mechanical Key : Yes
- Card + Passwords : ≤ 100
- Administrators : 9
- Working Temperature : -10-60 C
- Humidity : 20%-93%
- Battery : 4AAA
- Door Thickness : 35-70 mm
- Privacy password : Yes
- Lock Body material : SS304



■ HAL-008

Features

- Unlock Methods : Fingerprint, IC Card, Password, App, Key
- Material : Aluminium Alloy
- Fingerprints : ≤ 100
- Mechanical Key : Yes
- Card + Passwords : ≤ 100
- Administrators : 9
- Working Temperature : -10-60 C
- Humidity : 20%-93%
- Battery : Lithium Rechargeable Battery
- Door Thickness : 35-70 mm
- Privacy password : Yes
- Lock Body material : SS304



■ HAL-009

Features

- Unlock Methods : Fingerprint, IC Card, Password, App, Key
- Material : Aluminium Alloy
- Fingerprints : ≤ 100
- Mechanical Key : Yes
- Card + Passwords : ≤ 100
- Administrators : 9
- Working Temperature : -10-60 C
- Humidity : 20%-93%
- Battery : Lithium Rechargeable Battery
- Door Thickness : 35-70 mm
- Privacy password : Yes
- Lock Body material : SS304



■ HAL-013

Features

Facial Recognition Lock

- Unlock Methods : Fingerprint, IC Card, Password
Facial recognition, Key
- Material : Zinc Alloy
- Fingerprints : ≤ 100
- Mechanical Key : Yes
- Face : ≤ 50
- Card + Passwords : ≤ 100
- Administrators : 9
- Working Temperature : -10-60 C
- Humidity : 20%-93%
- Battery : 4AAA
- Door Thickness : 35-70 mm
- Privacy password : Yes
- Lock Body material : SS304



■ HAL-014

Features

- Unlock Methods : Fingerprint, IC Card, Password, App
- Mechanical Key : Yes
- Administrators : 09
- Fingerprints : 100
- Passwords + cards : 200
- APP : Yes
- Emergency power supply : Yes
- Battery : 4AAA
- Min. door thickness : 35 mm
(Available in sliding & swing door)
- Lock body material : SS304



■ HAL-015

Features

- Unlock Methods : Fingerprint, IC Card, Password, App, Key
- Mechanical Key : Yes
- Administrators : 09
- Fingerprints : 100
- Passwords + cards : 200
- APP : Yes
- Emergency power supply : Yes
- Battery : 4AAA
- Min. door thickness : 35 mm
(Available in sliding & swing door)
- Lock body material : SS304



■ HAL-016

Features

- Unlock Methods : Fingerprint, Key, Password, App
- Mechanical Key : Yes
- Fingerprints : 09
- Passwords : 200
- APP : Yes
- Emergency power supply : Yes
- Battery : 4AAA
- Min. door Thickness : 35 mm
(Available in sliding & swing door)
- Lock Body material : SS304



HAL-016-G



HAL-016-BM

■ HAL-017 (Lock with VDP)

Features

- Unlock methods : fingerprint, password, card, app, remote, indoor panel, mechanical key
- Master users : 09
- Ordinary Users : 240 (fingerprint, card, password)
- 7-way unlocking
- Two-way communication
- Remote unlocking
- Live updates
- Doorbell
- Tribolt with night latch
- 4AA batteries
- Power supply VDP : 15V, 2amp
- 7 inches screen

VDP also available with Digital Night Latch



Screen

Multi Storey Outdoor Unit

Outdoor Unit

HSPL-018

Specially designed for 16 x 45mm aluminium profile door

- Administrators : 03
- Unlocking methods : Fingerprint, card, password, mechanical key, app
- Fingerprints : 100
- Password : 100
- Low voltage alarm : 4.5 V
- Emergency power supply : Yes

HAL-019

Features

- Unlock Methods : Fingerprint ,password, mechanical key, app
- Number of administrators : 01
- Number of fingerprints : 08
- Number of passwords : 20
- Min. door thickness : 35mm
- Emergency power supply
- Auto freeze
- Low battery alarm
- 4AAA batteries

HAL-020

Features

- Unlock methods : Fingerprint , card, password, mechanical key, palm, face, app
- Number of administrators : 01
- Number of fingerprints : 99
- Number of cards : 99
- Number of passwords : 99
- Number of faces+palm vein : 50
- Battery MAH : 10000 MAH
- Min. door thickness : 50mm
- Emergency power supply
- Auto freeze
- Low battery alarm
- Lithium rechargeable battery



Hotel Locks

■ Features

- Satin
- SS304 + ABS
- 4 AA Batteries
- 890 Trail Records
- Auto Backup function
- Low Battery Indicator
- Battery Life 14 Months
- Mechanical Key Override
- PMS Integration Possible
- Door Thickness: 35-55mm
- Windows XP/W7/W8/W10
- Working Temperature -15°- 60°C
- Bluetooth /App Function (Optional)



■ HHL-003-S



■ HHL-004-G



■ HHL-005



■ HHL-006

■ Features

- Black
- Aluminium alloy
- 4 AAA Batteries
- 890 Trail Records
- Auto Backup function
- Low Battery Indicator
- Battery Life 14 Months
- Mechanical Key Override
- PMS Integration Possible
- Door Thickness: 30-55mm
- Windows XP/W7/W8/W10
- Working Temperature -15°- 60°C
- Bluetooth /App Function (Optional)
- Application : For sliding & swing doors



■ HHL-007

Hotel Lock Accessories



HHL-ACC-01
Encoder



HHL-ACC-02
Data Card



HHL-ACC-03
MF - Card



HHL-ACC-04, HHL-ACC-04-BM
Energy Saver



HHL-ACC-05
Lift Elevator System



HHL-ACC-DND
DND System

Cabinet Lock

HCL-05

- Material : Zinc Alloy
- Colour : Black
- Batteries : 4AAA
- User Capacity : 20 RFID Tags
- Working Temp : -30°C-60°C
- Low battery alarm : ≤ 4.8 V
- Door/panel thickness : 16-22 mm
- Front Panel Dimensions : 92*50 mm
- Emergency power supply

HCL-07

- Material : Zinc alloy
- Application : Swing, sliding, cabinets
- Battery life : 2000 times
- Finish : Black
- User capacity : 10 fingerprints
- Operating temp : -20° C -70° C
- Front panel Dia. : 40 MM
- Door panel thickness : 10MM-22mm
- Low Battery : 4.8VLi-Ion rechargeable battery
- Certifications : CE, FCC, ROHS, PSE, Salt spray tested



■ HCL-ACC-O6

RFID Tag



■ HCL-08

- Material : Zinc alloy
- Finish : Black
- Battery life : 2000 times
- Operating temp : -20° C -70° C
- Door panel thickness : 10 -22 mm
- User capacity : 10 fingerprints
- Dimensions : 32 X 32 mm
- Low Battery : 4.8V Li-Ion rechargeable battery
- Certifications : CE, FCC, ROHS, PSE, Salt spray tested



■ HCL-010

- Material : ABS
- Colour : Black
- User Capacity : 2 passwords
- Front Panel Dia. : 50 MM
- Working Temp. : -30°-60°
- Low battery alarm : ≤ 4.8 V
- Batteries : 4AAA
- Door/panel thickness : 16-22 mm
- Emergency power supply



■ HCL-011

- Material : Zinc Alloy
- Colour : Black
- batteries : 3AAA
- User Capacity : 100 fingerprints, 2 passwords
- Working Temp. : -30°-60°
- Low battery alarm : ≤ 4.8 V
- Door/panel thickness : 16-22 mm
- Front Panel Dimensions : 114*64 mm
- Emergency power supply



■ HCL-012

- Material : ABS
- Colour : Golden
- User Capacity : 20 RFID Tags
- Front Panel Dimensions : 92*50 mm
- Working Temp. : -30°-60°
- Low battery alarm : ≤ 4.8 V
- Batteries : 4AAA
- Door/panel thickness : 16-22 mm
- Emergency power supply





CONCEALED HINGES

FEATURES —

☒ Soft Close

⚙ Door Thickness 14-22 mm

☑ Opening angle 105°



Auto Close Concealed Hinge

- Clip on

Auto Close Concealed Hinge

- Slide on

Auto Soft Close Concealed Hinge

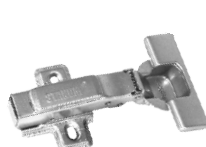
- Soft Close
- Clip on

Auto Soft Close Concealed Hinge

- Soft Close
- Clip on

Auto Soft Close Concealed Hinge 3D

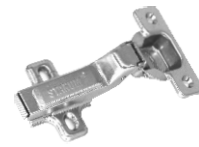
- Soft Close
- Clip on
- 3D Adjustable



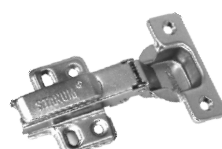
HNH-450-2S



HNH-458-2S



HNH-4515-2S



HNH-450-4S



HNH-458-4S



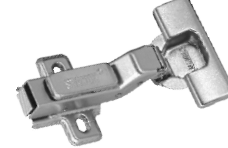
HNH-4515-4S



HASC-450-2S



HASC-458-2S



HASC-4515-2S



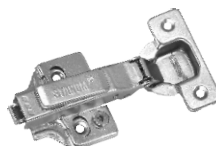
HASC-450-4S



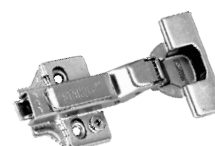
HASC-458-4S



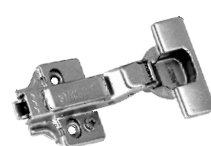
HASC-4515-4S



HASC-450-3D



HASC-458-3D



HASC-4515-3D

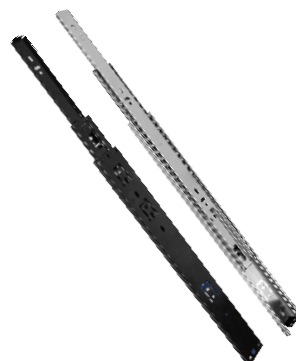
Ball Bearing Drawer Slides



STANDARD BALL BEARING SLIDES

- Weight Carrying capacity : 45kg
- Finish : Black & Zinc

HBB4510	10" Standard Ball Bearing Slide
HBB4512	12" Standard Ball Bearing Slide
HBB4514	14" Standard Ball Bearing Slide
HBB4516	16" Standard Ball Bearing Slide
HBB4518	18" Standard Ball Bearing Slide
HBB4520	20" Standard Ball Bearing Slide
HBB4522	22" Standard Ball Bearing Slide
HBB4524	24" Standard Ball Bearing Slide



STANDARD BALL BEARING SLIDES

- Weight Carrying capacity : 35kg
- Finish : Black & Zinc

HBB3510	10" Standard Ball Bearing Slide
HBB3512	12" Standard Ball Bearing Slide
HBB3514	14" Standard Ball Bearing Slide
HBB3516	16" Standard Ball Bearing Slide
HBB3518	18" Standard Ball Bearing Slide
HBB3520	20" Standard Ball Bearing Slide
HBB3522	22" Standard Ball Bearing Slide
HBB3524	24" Standard Ball Bearing Slide



SOFT CLOSE BALL BEARING SLIDES

- Weight Carrying capacity : 35kg
- Finish : Black & Zinc

HSC3510	10" Soft Close Ball Bearing Slide
HSC3512	12" Soft Close Ball Bearing Slide
HSC3514	14" Soft Close Ball Bearing Slide
HSC3516	16" Soft Close Ball Bearing Slide
HSC3518	18" Soft Close Ball Bearing Slide
HSC3520	20" Soft Close Ball Bearing Slide
HSC3522	22" Soft Close Ball Bearing Slide
HSC3524	24" Soft Close Ball Bearing Slide



PUSH OPEN BALL BEARING SLIDES

- Push Open
- Weight Carrying capacity : 35kg
- Finish : Black & Zinc

HPO3510	10" Push Open Ball Bearing Slide
HPO3512	12" Push Open Ball Bearing Slide
HPO3514	14" Push Open Ball Bearing Slide
HPO3516	16" Push Open Ball Bearing Slide
HPO3518	18" Push Open Ball Bearing Slide
HPO3520	20" Push Open Ball Bearing Slide
HPO3522	22" Push Open Ball Bearing Slide
HPO3524	24" Push Open Ball Bearing Slide



TANDEM BOX

Kit Includes

- screws
- Slides -Left/Right - 1 set
- Back brackets Left/Right - 1 set
- Drawer Side Panels-Left/Right - 1 set
- Stanum logo panel cover cap - 2 units

HSTB-89MM-16	16" Slim Tandem Box
HSTB-89MM-18	18" Slim Tandem Box
HSTB-89MM-20	20" Slim Tandem Box
HSTB-89MM-22	22" Slim Tandem Box
HSTB-171MM-16	16" Slim Tandem Box
HSTB-171MM-18	18" Slim Tandem Box
HSTB-171MM-20	20" Slim Tandem Box
HSTB-171MM-22	22" Slim Tandem Box
HSTB-203MM-16	16" Slim Tandem Box
HSTB-203MM-18	18" Slim Tandem Box
HSTB-203MM-20	20" Slim Tandem Box
HSTB-203MM-22	22" Slim Tandem Box



Features

- Drawer slides and drawer side panels are available as pairs
- Full-extension sliding system for a smooth and consistent closure. Allows the maximum access to drawer. Slow Motion damping technology provide easy motion.
- Dynamic Load capacity of 30 Kgs
- Surface color : Metallic Grey
- Soft Close

Multipurpose Lock

HMPL-01-22mm

- 22 MM Multi-purpose Lock
- Material: Zinc Alloy
- Application: Office Residential
- Finish Chrome



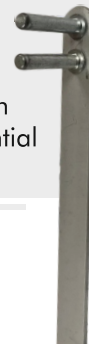
HMPL-01-32mm

- 32 MM Multi-purpose Lock
- Material: Zinc Alloy
- Application : Office/ Residential
- Finish Chrome



HMDL-01

- Side Mounted Drawer Lock
- Bar length : 500mm/600mm
- Application : Office/ Residential
- finish Chrome



PNEUMATIC PUMP

HPP-50-9	9" Pneumatic Pump
HPP-150-9	9" Pneumatic Pump
HPP-200-9	9" Pneumatic Pump
HPP-250-9	9" Pneumatic Pump
HPP-200-12	12" Pneumatic Pump
HPP-250-12	12" Pneumatic Pump
HPP-300-12	12" Pneumatic Pump



PNEUMATIC PUMP-SOFT CLOSE

HPP-50 SC-9	9" Pneumatic Pump
HPP-100 SC-9	9" Pneumatic Pump
HPP-120 SC-9	9" Pneumatic Pump
HPP-150 SC-9	9" Pneumatic Pump



Features

- Soft Close
- Silver Finish
- High Durability
- Wooden And Aluminium
- Smooth shutter opening & closing
- Suitable for wooden & aluminium
- Framed shutters
- Finish : Silver

DOOR CLOSER

FEATURES —

- ✚ Mounting on wooden and framed doors
Right and left hand opening door
- ⚙️ Thermostable fluid
- ✚ Adjustable arm
- 🌡️ Can withstand extreme temperature up to 70°C
- 🏠 Aluminium Pressure die casting body
- ⚙️ Two valve mechanism
- 🛢️ High grade oil used



■ HDC-401S

- Door weight up to 40 kg
- Power size EN-2
- Door width - 500-800 mm



■ HDC-601S

- Door weight up to 60 kg
- Power size EN-3
- Door width - 600-1200 mm



■ HDC-801S

- Door weight up to 80 kg
- Power size EN-4
- Door width - 900-1300 mm



■ HDC-452C

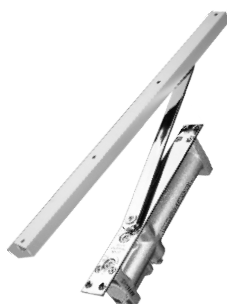
- Power size EN-2
- Weight capacity 40kg
- Door Thickness-32mm
- Door Width-500-800MM
- Hold Opening Mechanism



■ HDC-652C

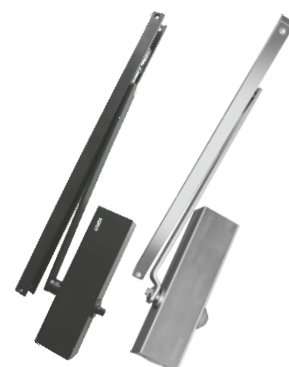
■ HDC-852C

- Door weight up to 65/80 kg
- Power size EN-3/EN-4
- Door width for 65kg - 600-1000 mm
- Door width for 80kg - 900-1300 mm
- Hold Opening Mechanism



■ HDC-803T

- Door weight up to 80 kg
- Power size EN-4
- SS304 Cover Plate
- Hold Opening Mechanism
- Door width - 900-1300



BUTT HINGES

FEATURES —

- 🔧 Designed for the smooth movement of the doors
- 🌐 Finish: SSS

4 Ball Bearing Butt Hinges

- SS304
- HBH-4BB-4x3x3.0 mm
- HBH-4BB-5x3x3.0 mm



2 Ball Bearing Butt Hinges

- SS304
- HBH-2BB-4x3x2.5 mm
- HBH-2BB-4x3x3.0 mm
- HBH-2BB-5x3x3.0 mm



Non Ball Bearing Butt Hinges

- SS202
- HBH-NBB-3x2.5x2.5 mm
- HBH-NBB-4x2.5x2.5 mm
- HBH-NBB-5x2.5x2.5 mm



Flap Hinges

- SS304
- HBH-FP-5x3x3 mm
- HBH-FP-4x3x3 mm



Wooden Hydraulic Hinge

- Application : Security Doors, flush doors, bathroom doors
- Weight capability : 80 kg/pair
- Opening angle : 180°
- Material : Stainless steel
- Closing speed : Adjustable
- Closing force : Adjustable
- Finish : Black matt



HHD-5x4x3mm-BM

3D CONCEALED HINGE

Features

- 3D vertical ± 3.0 mm, horizontal ± 2.0 mm and depth ± 1.0 mm
- OPENING ANGLE - 180 degree
- Max weight (2 hinges) : 60kg
- Fit for wooden doors and flush doors
- Dimension - H(140mm) x W (30mm) x D (25mm)
- MATERIAL - Zinc alloy embryo + aluminum alloy core
- Door Thickness ≥ 40 mm
- Door width < 1000mm



HACH-3D-60

DOOR HARDWARE

FEATURES —

🔑 Mortise Tubular Lever Handle With Round, Oval rosettes and escutcheon

🔧 Application : Wooden and Framed doors



■ CY-Series

Features

- Plate Handle Set
- Size : 202mm
- Material : Zinc
- Finish : CP/MATT
- Lock body 50*45mm : 2mm thick
- Key : 3nos
- Door Thickness : 40mm
- EP Cylinder : 60mm



CY/SS



CY/SS



CY/AN



CY/AN

■ KY-Series

Features

- Plate Handle Set
- Size : 205mm
- Material : Zinc
- Finish : CP/MATT
- Lock body 40*57mm : 2mm thick
- Key : 2nos
- Door Thickness : 30 to 40mm



KY/SS



KY/SS



KY/AN



KY/AN

■ HML-7151

Mortise Dead Lock for
Wooden Door Fitting-50mm

Features

- Mortise lock body with dead bolt for wooden door
- Finish : SSS
- Material : SS304



■ HML-7152

50 x 85mm Lock Body

Features

- Mortise lock body with latch bolt & dead Bolt for Wooden Door
- Finish : SSS
- Material : SS304



■ HML-7153

60 x 85mm Lock Body

Features

- Mortise Lock Body with latch Bolt & dead Bolt for Wooden Door
- Finish : SSS
- Material : SS304



■ HML-7154

50 x 85mm Lock Body

Features

- Mortise Lock Body with latch Bolt & dead Bolt for Wooden Door
- Finish : SSS
- Material : SS202



■ HML-7156

30 x 85mm Lock Body

Features

- Mortise Lock Body with latch & dead bolt for wooden & Framed Doors
- Finish : SSS
- Material : Ss304



■ HML-7157

30 x 85mm Dead Lock

Features

- Mortise Lock Body with dead bolt for wooden & Framed Doors
- Finish : SSS
- Material : SS304



■ HML-7158

18 x 85mm Lock Body

Features

- Mortise Lock Body with latch & dead bolt for wooden & Framed Doors
- Finish : SSS
- Material : SS304



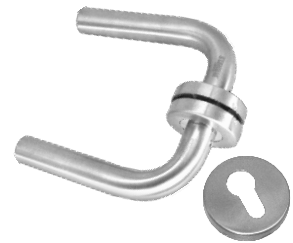
| MORTISE HANDLE

Features

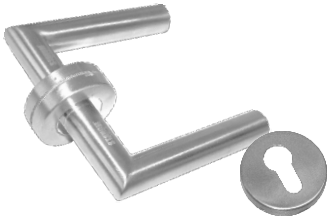
- Supplied in pairs
- Assemble with mortise lock and euro profile cylinder
- Fine finish with superior grip on handle
- Material - SS304



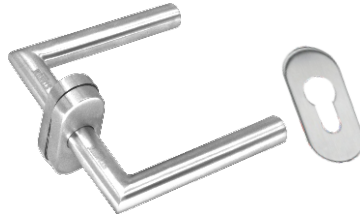
HMH-7101-SSS



HMH-7102-SSS



HMH-7103-SSS



HMH-7104-SSS



HMH-7105-SSS

| Both Side Key Cylinder 60/70mm

Features

- Both side key application secure key. with five regular key
- Assemble with mortise handle mortise lock body
- Provides Locking Solution for wooden & framed door
- Useful only for single wooden & framed door
- Material : Brass
- 80mm available on an order basis



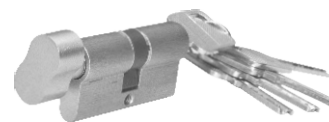
HMC-7131

HMC-7132

| One Side Key One Side Knob Cylinder 60/70/80mm

Features

- For one side Key and one side knob application with secure key
- Assemble with mortise handle mortise lock body
- Provides Locking Solution for wooden door
- Useful only for single wooden door
- Material : Brass



HMC-7133

HMC-7134

HMC-7137

| Coin Type Cylinder 60/70mm

Features

- One side knob application for one side Locking Solution
- Suitable only for bathroom type door
- Assemble with Mortise Handle and mortised lock body
- Provides locking solution for wooden door
- Useful only for single wooden door
- Material : Brass
- 80mm available on an order basis



HMC-7135

HMC-7136

HTDL-001

Escutcheon with knob & occupied

Features

- Material : SS304
- Finish : Matt
- Door Thickness : 10mm to 70mm
- Vacant engage Indicator
- For toilets and restrooms
- Application : Airports, shopping malls, hospitals and office building



HTDL-002

Lock Body for HTDL-001

Features

- Locks & Security Systems
- Single dead bolt with single through 13mm
- Door Thickness : 30mm to 70mm
- Finish : Powder coated



HTDL-003 (For Sliding Door)

Escutcheon with knob & occupied

Features

- Material : Zinc
- Finish : Matt
- Door Thickness : 10mm to 70mm
- For toilets and restrooms
- Application : Airports, shopping malls, hospitals and office building



TOWER BOLTS

Features

- Standard Tower Bolt
- Material : SS202
- Finish : Satin

HTB-4-SS	4" Standard Tower Bolt
HTB-6-SS	6" Standard Tower Bolt
HTB-8-SS	8" Standard Tower Bolt
HTB-10-SS	10" Standard Tower Bolt
HTB-12-SS	12" Standard Tower Bolt

TOWER BOLTS

Features

- Standard Tower Bolt
- SS-304
- Finish : Satin

HTB-P-4-SS	4" Standard Tower Bolt
HTB-P-6-SS	6" Standard Tower Bolt
HTB-P-8-SS	8" Standard Tower Bolt
HTB-P-10-SS	10" Standard Tower Bolt
HTB-P-12-SS	12" Standard Tower Bolt
HTB-P-18-SS	18" Standard Tower Bolt



ALDROP

Features

- Size : 4mm x 16mm x 250mm
- Diameter : 10MM
- Material : SS201
- Cramp Type : 3+1



Cylinder knob

■ HKL-01

Feature

- Key Operation from outside and push button from inside
- 6 pin cylinder
- 3 brass key
- Tested 2,00,000 Cycles
- Suitable for 35 to 45mm wooden door
- 70mm backset
- Finish: SSS
- Material SS304



■ HKL-01

Knob lock with key

■ HKL-02

Features

- Finish : SS
- Material : SS304



■ HKL-02

Knob handle

■ HKL-03

Features

- Push Button from inside and coin release from outside
- 6 pin cylinder
- Tested 2,00,000 Cycles
- Suitable for 35 to 45mm wooden door
- 70mm backset
- Finish: SSS
- Material: SS304



■ HKL-03

Knob lock with push button & coin release

■ HKL-01 (BM | MG | ANT | G)

■ HKL-04 (BROWN)

Feature

- Ansi Grade 3
- 6 pin cylinder
- 60 MM backset
- Material : SS304
- Suitable for thickness : 35-45mm
- Key operation outside and push Button/knob inside
- Finish: Marble golden, Gold, Black Matte, Antique, Brown



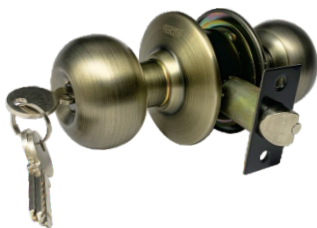
■ HKL-01-BM

Knob lock with key



■ HKL-01-MG

Knob lock with key



■ HKL-01-ANT

Knob lock with key



■ HKL-01-G

Knob lock with key



■ HKL-04-BR

Knob lock with key

HDST-01

Door Stopper

- Rubber Fixed for Glass Safety
- Finish : Matt
- Material : SS304



HDST-02

Door Stopper

- Material : Zinc alloy
- Finish : Matt
- Size : 5 Inches



HDST-03

Door Stopper

- Material : SS
- Finish : Matt
- Size : 3 Inches



HNL-001

Night Latch Lock

Features

- Door thickness 30-60mm
- Single point dead bolt for security
- Latch lockable by knob from inside
- 3 High Security Computerized dimple Brass Keys
- Finish - powder coated-matt



HDA-01

Door Chain

- Material : SS202



HDA-02 Door Eye

- Door Thickness : 35-60mm
- Hole Diameter : 17mm
- Angle 170°
- Material : Brass



HDA-03

Door Chain

- Material : Stainless steel
- Backset : 60mm
- Chain Length : 82mm
- Finish : Polished gold



Drop down seal

- Length : 900-1000
- Finish : AN.



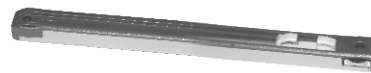
Wardrobe Sliding

HWSL-001 - 2 Panel

Wardrobe Sliding System- 2 Panel Set



Roller
(8 pcs)



Dampner Roller
(4 pcs)



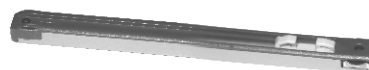
End Cover
(8 pcs)

HWSL-001 - 3 Panel

Wardrobe Sliding System- 3 Panel Set



Roller
(12 pcs)



Dampner Roller
(4 pcs)




End Cover
(8 pcs)

HWSL-001-Double Top Bottom Track-2.4 Mtr
HWSL-001-Double Top Bottom Track-3.6 Mtr

WOODEN SLIDING FOLDING SYSTEM

— FEATURES —

 Track material : Anodized Aluminum


 Track length : 12 ft | 16 ft

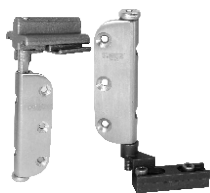
 Max panel width : 800mm

 Max panel weight : 50 kg

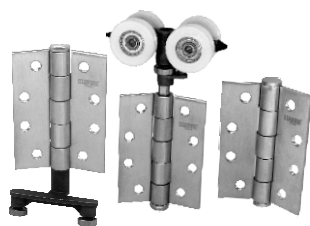
 Max height : 2400mm

Sliding Folding System

 **HDSL-201-W**
Top & Bottom Pivot




 **HDSL-203-W**
Hinges With Intermediate Roller With Bottom Guide




 **HDSL-ACC-002-S**
Wooden Sliding Door Lock
• Door Thickness - 30 to 50 mm
• Material - Alloy




 **HDSL-TT**
Top track
• Available in 12ft & 16ft




 **HDSL-202-W**
Panel to Panel Connecting Hinge with Handle



 **HDSL-204-W**
End roller with bottom guide



 **HDSL-BL**
Bottom track
• Available in 12ft & 16ft



SLIDING SYSTEM

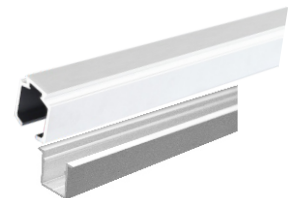
FEATURES

- ☞ 2 Meter/ 4 Meter
- ☞ Soft close
- ☞ Wooden/Framed door's

Sliding System -Sliding Door Roller

HDSL-302-W

- Maximum Door width : 1000mm
- Maximum Door Height : 2400mm
- Weight : 80kg
- Length : 2mtr
- Door thickness : 30-60mm
- Track Material : Aluminium anodizing



HDSL-302-W-Top Track
HDSL-302-W-Bottom Track

HDSL-305-W (Ghost door)

- Maximum Door width : 800mm
- Maximum Door Height : 2400mm
- Weight : 50-60kg
- Length : 1.21mtr
- Door thickness : 40-50mm
- Track Material : Aluminium anodizing

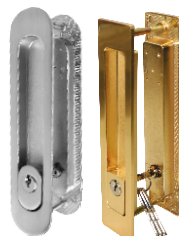


HDSL-305-W-Track

Wooden Door Lock with Handle

HDSL-ACC-002-S HDSL-ACC-002-G

- Wooden door lock : 180mm
- Door thickness : 30-50mm
- Finish : Gold | Silver



HDSL-ACC-003-S HDSL-ACC-003-G

- Wooden door lock : 180mm
- Door thickness : 30-50mm
- Finish : Silver | Gold



HDSL-ACC-004-S

- Wooden door lock : 120mm
- Door thickness : 30-50mm
- Finish : Silver



HDSL-ACC-005-S

- Wooden door lock : 120mm
- Door thickness : 30-50mm
- Finish : Silver

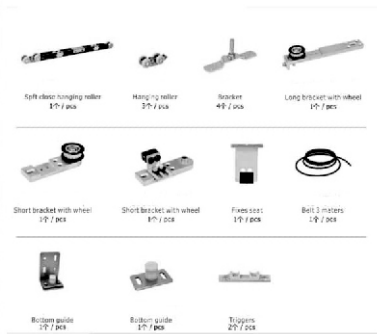
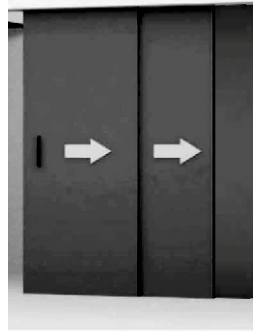


Telescopic Sliding System

Max. Opening Space Interlinked panel - 2+1

■ HDSL-306-W

- Synchronized soft closing system for 2 doors
- One side opening,
- Door Fan width : 500-1000mm
- Door thickness : 30-50mm
- Door weight : 80kg s/door



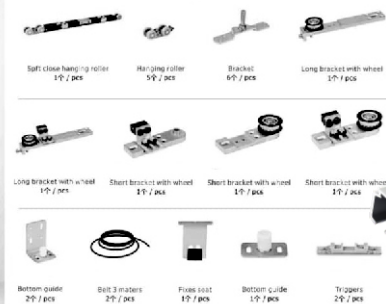
HDSL-W-TOP TRACK 4M
HDSL-W-BOTTOM TRACK 2M

Telescopic Sliding System

Max. Opening Space Interlinked panel - 3+1

■ HDSL-307-W

- Synchronized soft closing system for 3 doors
- One side opening
- Door thickness : 30-50mm
- Door Fan width : 500-1000mm
- Door weight : 80kg s/door



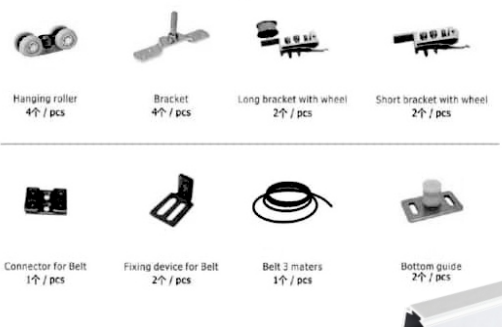
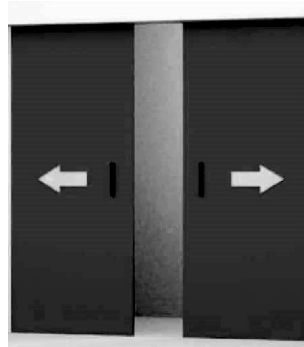
HDSL-W-TOP TRACK 4M
HDSL-W-BOTTOM TRACK 2M

Synchronised sliding system

Synchronised panel Two Panel - 80 Kgs

■ HDSL-308-W

- Synchronized inversion soft closing system for 2 doors
- Opposite opening
- Door thickness : 30-50mm
- Door Fan width : 500-1000mm
- Door weight : 80kg s/door



HDSL-W-TOP TRACK 4M
HDSL-W-BOTTOM TRACK 2M

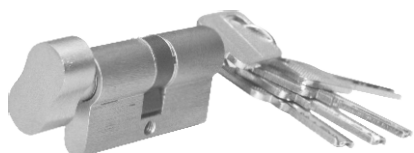
Fire Rated Product

■ HMC-7133-F

One Side Key One Side Knob Cylinder 60mm

Features

- For one side Key and one side knob application with secure key
- Assemble with mortise handle mortise lock body
- Provides Locking Solution for wooden door
- Useful only for single wooden door
- Material : Brass



■ HMC-7134-F

One Side Key One Side Knob Cylinder 70mm

Features

- For one side Key and one side knob application with secure key
- Assemble with mortise handle mortised lock body
- Provides Locking Solution for wooden door
- Useful only for single wooden door
- Material : Brass



■ HMM-7101-SSS-F

Mortise Handle

Features

- Round handle with round pipe Supplied in pairs
- Assemble with mortise lock and euro profile cylinder
- Fine finish with superior grip on handle



■ HML-7151-F

Mortise Dead Lock for
Wooden Door Fitting (55 mm)

Features

- Mortise lock body with dead bolt for wooden door
- Finish : SSS
- Grade : SS304



■ HBH-2BB-4x3x3mm - F

Fire Rated Butt Hinge

Features

- SS304
- 2 Ball Bearing



■ HML-7152-F

50 x 85mm Lock Body

Features

- Mortise lock body with latch bolt & dead Bolt for Wooden Door
- Finish : SSS
- Grade : SS304



Fire Rated Product

D-Type

- Model No. : HPH-5118-F
- Handle Diameter : 25 mm
- Length : 600 mm
- Center to Center : 575 mm
- Hole Diameter in Glass : 14 mm
- Finish : SSS
- Material : SS304



HDC-804-F

- Door Weight upto 80 Kg.
- Right hand and left hand opening doors
- Power Adjustable EN2 to EN4
- Adjustable Arm
- Door width : 850-1100 mm

Features

- Five Lakh cycles tested
- High quality imported gaskets to prevent oil leakage
- Strong Spring to guarantee powerful closing
- Fine quality aluminium alloy body
- Hydraulic control of closing speed by the help of adjustable valves

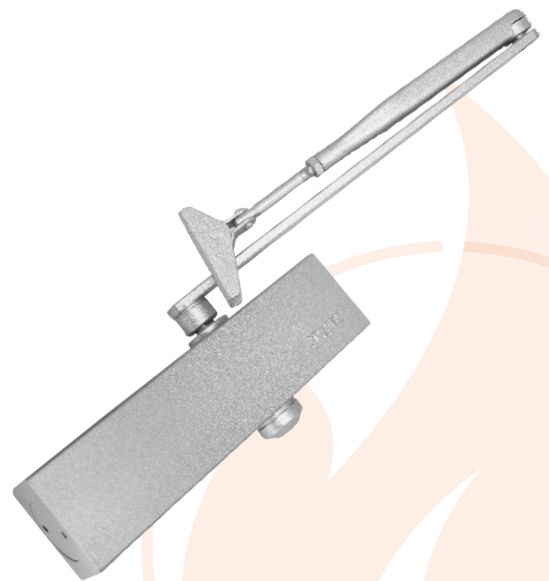


HDC-105-F

- Door Weight upto 100 Kg.
- Right hand and left hand opening doors
- Power Adjustable EN2 to EN5
- Adjustable Arm
- Door width : 850-1250 mm

Features

- Five Lakh cycles tested
- High quality imported gaskets to prevent oil leakage
- Strong Spring to guarantee powerful closing
- Fine quality aluminium alloy body
- Hydraulic control of closing speed by the help of adjustable valves



EXIT



Cross Push Bar

- Door Thickness 40-50mm
- Max. Door Width : 1200mm
- Fire Rated 2 Hours
- External Trim Optional
- Material : SS304
- Height 2400mm

HPD-CB-S-1200mm	Panic Bar Single Point
HPD-CB-D-1200mm	Panic Bar Double Point
HPD-CB-T-1200mm	Panic Bar Three Point

External Trim

HPD-TRIM-R

- Round External Trim
- Max Door Thickness : 40-50mm
- Inbuilt EP Cylinder
- 3 Keys
- SS304
- SSS Finish
- Application : Wooden/Metal





LFG HARDWARE PVT. LTD.

📍 A-2/30-31, IIIrd Floor W.H.S., DDA Marble Market Kirti Nagar,
New Delhi-110015, INDIA

☎ Customer Care No.- +91-9910336644

🌐 www.stanum.co